



We create chemistry

# WALLTITE® v.5

Closed-Cell Spray Foam ULC ER-41037

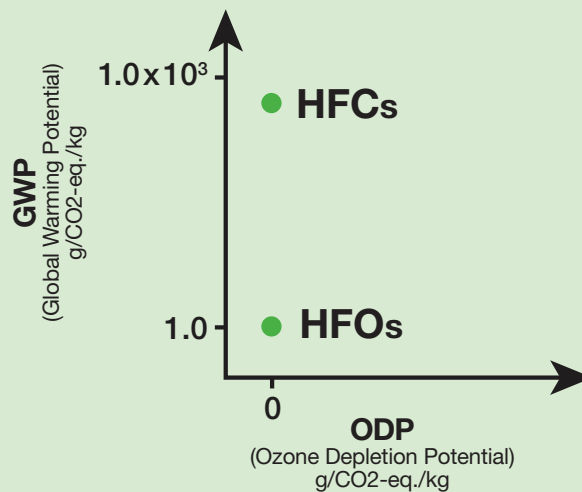
Building Efficiency Today  
in a Sustainable Way

## WHAT IS GLOBAL WARMING POTENTIAL?

The **Global Warming Potential** was developed to allow comparisons of the global warming impact of different gases. The larger the GWP, the more that a given gas warms the Earth compared to carbon dioxide (CO<sub>2</sub>) over that time period.

WALLTITE® v.5 uses a low GWP (<1) blowing agent based on HFO chemistry. By changing to HFO chemistry, we are reducing the global warming impact.

## GLOBAL WARMING POTENTIAL OF HFCs VS. HFOs



WALLTITE® v.5 is a medium-density closed-cell SPF insulation using HFO-based chemistry. It is ideal for insulation and air sealing applications in residential and commercial construction.

## BENEFITS OF WALLTITE



**Offers space efficiency**  
due to high R-value/inch



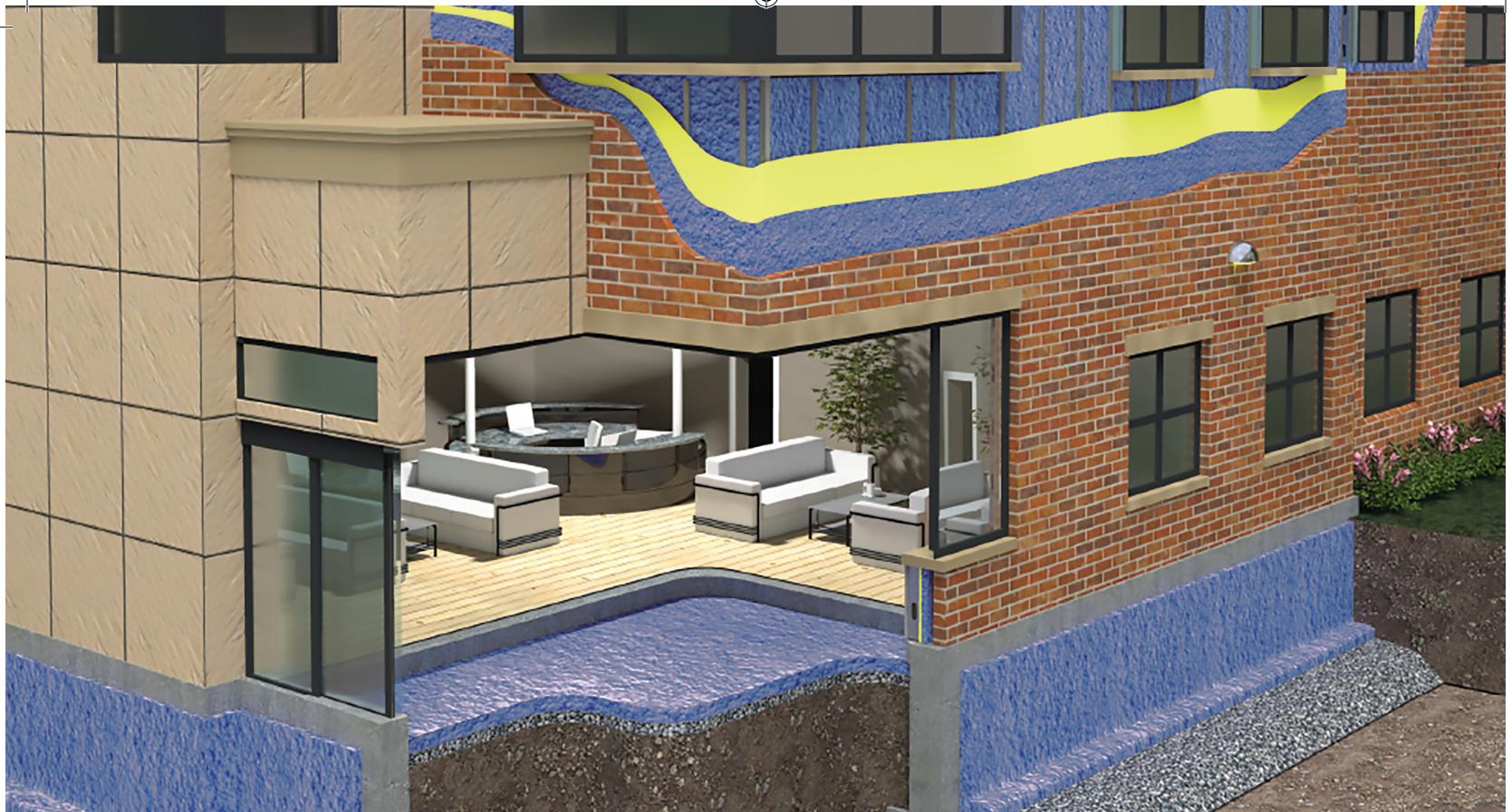
**Increases a building's energy efficiency**



**Excellent air sealing ability**  
expands while being installed:  
creating an effective air and vapour barrier, and reduces leakages



**Design freedom**  
to insulate in difficult  
to reach areas



## LONG-TERM THERMAL RESISTANCE (LTTR) OF WALLTITE® v.5

TEST METHOD: CAN/ULC-S770-09 AND CAN/ULC-S770-15

THICKNESS mm (inches)	R-VALUE ft <sup>2</sup> hr • °F / BTU	RSI m <sup>2</sup> • K/W
50.0 (1.97)	11.1	1.95
50.8 (2.00)	11.2	1.98
63.5 (2.50)	14.3	2.52
75.0 (2.95)	17.0	3.00
76.2 (3.00)	17.3	3.05
88.9 (3.50)	20.4	3.60
100.0 (3.94)	23.1	4.07
102.0 (4.00)	23.5	4.14

## WALLTITE® APPLICATIONS

- Above Grade Wall: Between Framing and CI (Continuous Insulation)
- Cavity Wall
- Interior of Precast, Masonry and Spandrel Panels
- Overhead; Garage Ceilings, Cantilevers
- Foundation Walls: Interior or Exterior
- RADON Control Under Slabs on ground
- Walls required to meet CAN/ULC S134 and Fire Rated Walls

For more information on WALLTITE SPRAY FOAM, visit:

[walltite.com](http://walltite.com)

1-866-474-3538



GREENGUARD® and GREENGUARD® Gold certifications are certified by UL Environment.

Data presented in this document is based on tests and information, which we believe to be reliable. This document is provided for information purposes only and without any representation, warranty or condition, expressed or implied, regarding its accuracy or completeness. Whether or not this data is used or relied upon is within the sole discretion and judgement of user. Since BASF Canada Inc. has no control over the conditions of handling, storage, use and disposal of the products, BASF Canada Inc. does not assume any responsibility or liability and expressly disclaims all liability for any claim, loss, damage, injury or expense resulting therefrom.

2023\_SEA-V5-14Nov01