

Technical Evaluation Report™

A Duly Authenticated Report from an Approved Agency

Report Number 1410-01

**BASF HP+™ Wall X Series in Combination with Neopor® FPIS and
6mm (1/4") Thick OSB Utilizing WALLTITE® v.5 SPF – Canada**

BASF Corporation

**Product:
BASF HP+ Wall X Series**

Issue Date:

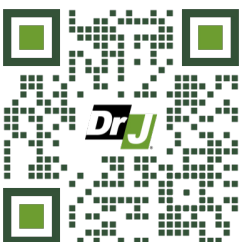
February 22, 2017

Revision Date:

December 18, 2024

Subject to Renewal:

January 1, 2026



Use the QR code to access the most recent version or a sealed copy of this report at drjcertification.org.



Company Information:

BASF Corporation
100 Park Ave
Florham Park, NJ 07932-1089
Phone: 973-245-6000
Website: www.construction.basf.com

Additional Listees:

CSI Designations:

DIVISION: 06 00 00 - WOOD, PLASTICS AND COMPOSITES
Section: 06 12 00 - Structural Panels
Section: 06 12 19 - Shear Wall Panels
Section: 06 16 00 - Sheathing

DIVISION: 07 00 00 - THERMAL AND MOISTURE PROTECTION
Section: 07 21 00 - Thermal Insulation
Section: 07 25 00 - Water-Resistive Barriers/Weather Barriers

1 Innovative Product Evaluated¹

- 1.1 BASF HP+ Wall X Series

2 Applicable Codes and Standards²

2.1 Codes

- 2.1.1 *NBC—10, 15, 20: National Building Code of Canada*
- 2.1.2 *NECB—17, 20: National Energy Code of Canada for Buildings*
- 2.1.3 *O Reg. 332/12: Ontario Building Code (OBC)³*

2.2 Standards and Referenced Documents

- 2.2.1 *ASTM E72: Standard Test Methods of Conducting Strength Tests of Panels for Building Construction*
- 2.2.2 *ASTM E330: Standard Test Method for Structural Performance of Exterior Windows, Doors, Skylights, and Curtain Walls by Uniform Static Air Pressure Difference*
- 2.2.3 *ASTM E2126: Standard Test Methods for Cyclic (Reversed) Load Test for Shear Resistance of Vertical Elements of the Lateral Force Resisting Systems for Buildings*
- 2.2.4 *CAN/ULC-S102: Standard Method of Test for Surface Burning Characteristics of Building Materials and Assemblies*
- 2.2.5 *CAN/ULC-S102.2: Test for Surface Burning Characteristics of Flooring, Floor Coverings, and Miscellaneous Materials and Assemblies*
- 2.2.6 *CAN/ULC-S127: Standard Corner Wall Method of Test for Flammability Characteristics of Non-Melting Building Materials*
- 2.2.7 *CAN/ULC-S701: Standard for Thermal Insulation, Polystyrene, Boards, and Pipe Covering*
- 2.2.8 *CAN/ULC-S705.1: Standard for Thermal Insulation - Spray Applied Rigid Polyurethane Foam, Medium Density - Material Specification*
- 2.2.9 *CAN/ULC-S705.2: Standard for Thermal Insulation - Spray Applied Rigid Polyurethane Foam, Medium Density - Application*
- 2.2.10 *CSA O86-19: Engineering Design in Wood*
- 2.2.11 *CWC: Engineering Guide for Wood Frame Construction 2014 Edition*

3 Performance Evaluation

- 3.1 Testing and related engineering evaluations are defined as intellectual property and/or trade secrets.⁴
- 3.2 Engineering evaluations are conducted within DrJ's ANAB accredited ICS code scope, which are also its areas of professional engineering competence.⁵
- 3.3 BASF HP+ Wall X Series was evaluated to determine:
 - 3.3.1 Structural performance under lateral-load conditions in accordance with the following:
 - 3.3.1.1 NBC Division B Subsection 9.23.13 Bracing to Resist Lateral Loads Due to Wind and Earthquake
 - 3.3.1.2 NBC Section 4.1 Structural Loads and Procedures and the Engineering Guide for Wood Frame Construction
 - 3.3.2 Structural performance under uplift and gravity loads for use with single top plates in accordance with NBC Division B Article 9.23.11.3.
 - 3.3.3 Structural performance under transverse-load conditions for use to resist factored external wind loads in accordance with NBC Division B Subsection 9.23.13.
 - 3.3.4 Continuous insulating sheathing requirements complying with the provisions of NBC Division B Part 5 and Subsection 9.25.2.
 - 3.3.5 Performance for use as a component of the air-barrier system in accordance with NBC Division B Section 5.4 and Subsection 9.25.3.
 - 3.3.6 Flame-spread rating and smoke-developed classification complying with the provisions of NBC Division B Subsection 3.1.12 and Article 9.10.3.2.
- 3.4 Performance of BASF HP+ Wall X Series or any of its component materials for use as a Water-Resistive Barrier (WRB) assembly or WRB material is outside the scope of this report.
- 3.5 Performance of BASF HP+ Wall X Series or any of its component materials as used in the normal construction process is outside the scope of this report.
 - 3.5.1 This refers to storage, weather conditions, durability considerations, handling, installing, restraining, and bracing of BASF HP+ Wall X Series through the shipping, storing, and construction means-and-methods process.
- 3.6 Use of BASF HP+ Wall X Series in a portal frame is outside the scope of this report.
- 3.7 Any engineering evaluation conducted for this report was performed on the dates provided in this report and within DrJ's professional scope of work.
- 3.8 Kevin Below, P. Eng., has collaborated with DrJ through the review of this report.
- 3.9 Any regulation specific issues not addressed in this section are outside the scope of this report.

4 Product Description and Materials

4.1 The innovative product evaluated in this report is shown in **Figure 1** and **Figure 2**.

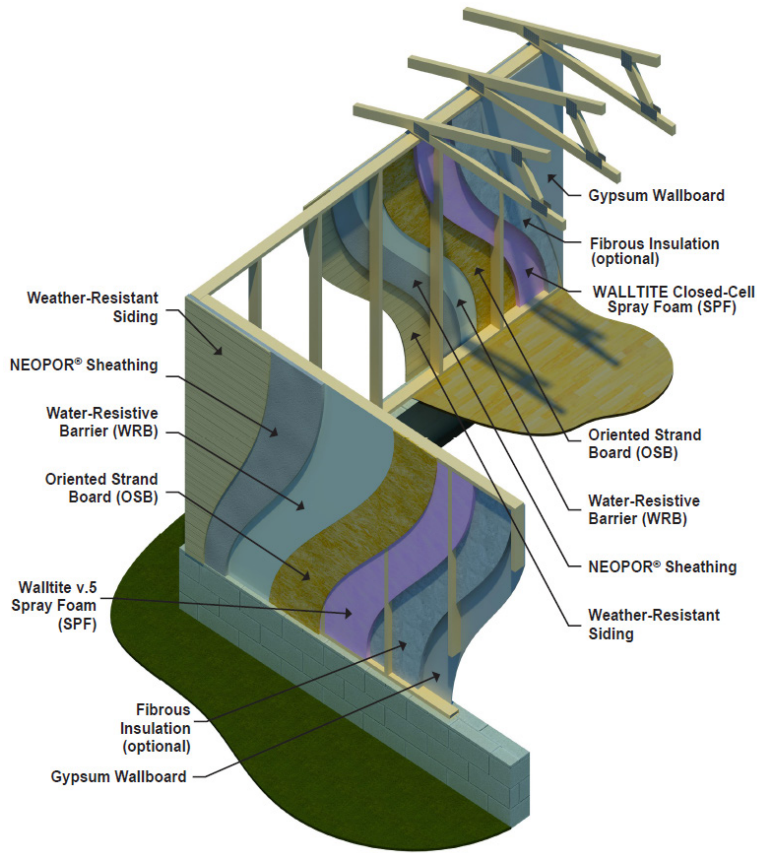


Figure 1. Illustration of BASF HP+ Wall X Series

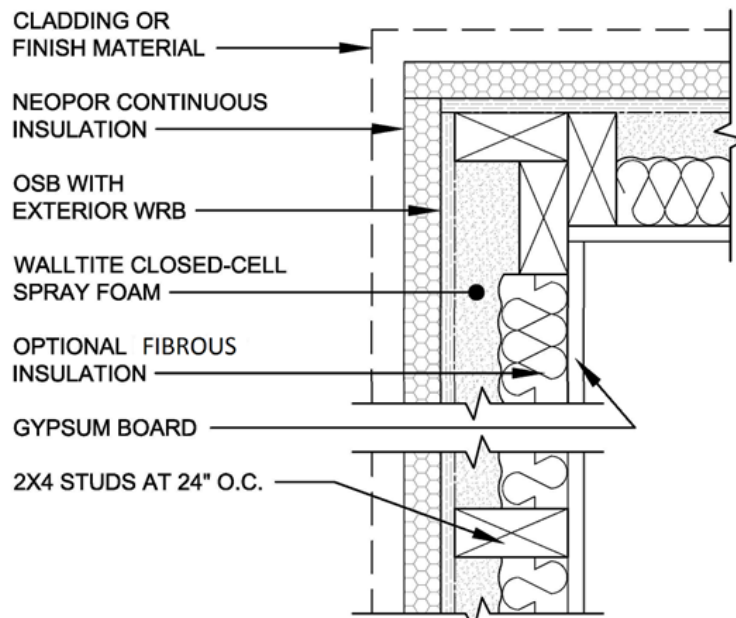


Figure 2. Cross Section BASF HP+ Wall X Series Layers

- 4.2 BASF HP+ Wall X Series is a proprietary wall system consisting of WALLTITE v.5 Spray Polyurethane Foam (SPF) combined with Neopor Foam Plastic Insulating Sheathing (FPIS), and 6 mm thick (1/4") OSB (**Figure 1** and **Figure 2**).
- 4.2.1 The BASF HP+ Wall X Series described in this report contains a combination of the following materials:
 - 4.2.1.1 *Spray Polyurethane Foam (SPF)*:
 - 4.2.1.1.1 WALLTITE v.5 SPF - minimum thickness: 38 mm
 - 4.2.1.2 *Neopor FPIS*:
 - 4.2.1.2.1 Minimum thickness - 25 mm up to 51 mm
 - 4.2.1.2.1.1 Minimum 3.3 mm x 89 mm nail with a minimum of 38 mm penetration into framing. Fastener spacing 150 mm along perimeter and 300 mm in the field.
 - 4.2.1.2.1.2 Top/Bottom: fastened with minimum 3.3 mm x 89 mm nail with plastic cap at 150 mm o.c.
 - 4.2.1.3 *Nominal 2x Wood Framing*:
 - 4.2.1.3.1 2 x 4 (38 x 89 mm) studs – Stud-grade Spruce-Pine-Fir (SPF) or better
 - 4.2.1.3.1.1 Each stud fastened to top and bottom plates with minimum of three (3) 3.3 mm x 83 mm nails.
 - 4.2.1.3.2 2 x 4 top (single or double) and bottom plates – No. 2 SPF or better

5 Applications

- 5.1 BASF HP+ Wall X Series is used in buildings constructed in accordance with NBC Division B Section 9.23 for wood frame construction. BASF HP+ Wall X Series is used to provide:
 - 5.1.1 Lateral-load resistance (wind and seismic) for braced BASF HP+ Wall X Series panels used in wood frame construction.
 - 5.1.2 Transverse-load resistance for braced BASF HP+ Wall X Series panels used in wood frame construction.
 - 5.1.3 Resistance to uplift and gravity loads in single-top-plate applications for BASF HP+ Wall X Series assemblies used in wood frame construction in accordance with NBC Division B Article 9.23.11.3.
- 5.2 BASF HP+ Wall X Series is used to provide thermal resistance in the exterior wall of the building thermal envelope in accordance with NBC Division B Subsections 5.3.1 and 9.25.2.
- 5.3 BASF HP+ Wall X Series is used to provide resistance to air leakage in the exterior wall of the building envelope in accordance with NBC Division B Subsections 5.4.1 and 9.25.3.
- 5.4 BASF HP+ Wall X Series may be used in buildings designed in accordance with NBC Division B Section 4.1 Structural Loads and Procedures or the Engineering Guide for Wood Frame Construction.
- 5.5 *Structural Applications*
 - 5.5.1 Except as otherwise described in this report, BASF HP+ Wall X Series shall be installed in accordance with the applicable building codes listed in **Section 2** using the provisions set forth herein for the design and installation of Wood Structural Panels (WSP) and this report.
 - 5.5.2 BASF HP+ Wall X Series are permitted to be designed in accordance with NBC Division B Part 9 Articles 9.23.13.1, 9.23.13.2, and 9.23.13.3 for the design of lateral-load-resisting systems using the methods and conditions set forth therein for equivalence to the sheathing requirements in NBC Division B Table 9.23.13.6 and Table 9.23.17.2.-A as follows:
 - 5.5.2.1 Equivalent to 12.7 mm sheathing using fasteners conforming to NBC Division B Table 9.23.3.1, Sentence A 9.23.3.1.(2), and Tables 9.23.3.5.-A, -B, or -C, as appropriate, and with a minimum penetration of 38 mm into framing, spaced at 150 mm o.c. along edges and at 300 mm o.c. in the field, on framing spaced at a maximum of 600 mm o.c.

- 5.5.3 Anchorage for in-plane shear shall be provided to transfer the induced shear force into and out of each shear wall in accordance with NBC Division B Subsection 9.23.6.
 - 5.5.3.1 For buildings with two or more floors supported by frame walls that are in areas where the seismic spectral response acceleration, $S_a(0.2)$, is not greater than 0.70 or where the 1-in-50 hourly wind pressure is equal to or greater than 0.80 kPa, but not greater than 1.20 kPa, two anchor bolts per braced wall panel are required.
 - 5.5.3.1.1 Anchor bolt diameter shall not be less than 15.9 mm, located within 0.5 m of the end of the foundation and spaced at not more than 2.4 m o.c., or
 - 5.5.3.1.2 Anchor bolt diameter shall not be less than 12.7 mm, located within 0.5 m of the end of the foundation and spaced at not more than 1.7 m o.c.
 - 5.5.3.2 For buildings supported by frame walls that are in areas where the seismic spectral response acceleration, $S_a(0.2)$, is greater than 0.70 but not greater than 1.8 and the 1-in-50 hourly wind pressure is not greater than 1.20 kPa, two anchor bolts per braced wall panel are required and spaced in accordance with NBC Division B Table 9.23.6.1.
 - 5.5.3.3 Where the seismic spectral response acceleration, $S_a(0.2)$, is greater than 1.8 or the 1-in-50 hourly wind pressure is equal to or greater than 1.2 kPa, anchorage shall be designed according to NBC Division B Part 4.
- 5.5.4 The maximum aspect ratio for full-height BASF HP+ Wall X Series braced wall segments shall be 4:1.
- 5.5.5 The minimum full-height panel width shall be 600 mm. Panels may be installed vertically or horizontally.
- 5.5.6 All Neopor and OSB panel edges shall be supported on a framing member with a minimum width of 38 mm. Abutting panel edges shall be generally centered on the framing member.
- 5.5.7 Installation is permitted for single-top-plate or double-top-plate applications in accordance with NBC Division B Article 9.23.11.3 where concentrated loads from ceilings, floors, and roofs are not more than 50 mm to one side of the studs.
- 5.5.8 Where the application exceeds the limitations set forth herein, design shall be permitted in accordance with accepted engineering procedures, experience, and technical judgment.
- 5.6 *Acceptable Solutions in Accordance with NBC Division B Part 9 Bracing Applications*
 - 5.6.1 BASF HP+ Wall X Series may be used to brace walls of buildings as an equivalent to OSB, O-2 Grade in accordance with NBC Division B Table 9.23.13.6 Minimum Thicknesses of Cladding, Sheathing or Interior Finish for Braced Wall Panels as follows:
 - 5.6.1.1 Supports at 400 mm o.c.: 11 mm minimum sheathing thickness
 - 5.6.1.2 Supports at 600 mm o.c.: 12.5 mm minimum sheathing thickness
 - 5.6.2 Where a building, or portion thereof, does not comply with one or more of the bracing requirements within the acceptable solutions of NBC Part 9, those portions shall be designed and constructed in accordance with NBC Division B Part 4 Structural Loads and Procedures or the Engineering Guide for Wood Frame Construction in accordance with NBC Division B Sentence 9.23.13.1.2(b)(ii or iii) as one of the following:
 - 5.6.2.1 As an equivalent to OSB, O-1 or O-2 Grades in NBC Division B Table 9.23.13.6, with supports at 400 mm o.c.: 11 mm minimum sheathing thickness using fasteners conforming to Table 9.23.3.1, Sentence A-9.23.3.1.(2), and Table 9.23.3.5.-A, -B, or -C as appropriate and with a minimum penetration of 41 mm into framing, spaced 150 mm o.c. along edges and 300 mm o.c. in field.
 - 5.6.2.2 As an equivalent to OSB, O-1 or O-2 Grades in NBC Division B Table 9.23.13.6, with supports at 600 mm o.c.: 12.5 mm minimum sheathing thickness using fasteners conforming to Table 9.23.3.1, Sentence A-9.23.3.1.(2), and Table 9.23.3.5.-A, -B, or -C as appropriate and with a minimum penetration of 41 mm into framing, spaced 150 mm o.c. along edges and 300 mm o.c. in field.
 - 5.6.2.3 Using the design values given in **Table 1**.

Table 1. Shear Resistance (Limit States Design) for BASF HP+ Wall X Series – Wind or Seismic^{1,3,5}

Wall Assembly ⁷	Maximum Stud Spacing mm	Interior Gypsum Wallboard Minimum Thickness, ^{2,8} mm	Maximum Gypsum Board Fastener Spacing (edge:field) mm	Specified Shear Strength, kN/m	Ductility Factor, ³ R _d	Over-strength Factor, ⁴ R _o	Structural System Limitations & Building Height Limit ⁶ m				
							I _e F _a S _a (0.2)			I _e F _a S _a (1.0)	
							< 0.2	≥ 0.2 to < 0.35	≥ 0.35 to ≤ 0.75	> 0.75	> 0.3
25 mm Neopor, 6 mm OSB, 25 mm SPF	600 o.c.	12.7	300:600	10.6	2.0	1.7	NL	NL	20	20	20
25 mm Neopor, 6 mm OSB, 51 mm SPF				12.0	2.0	1.7	NL	NL	20	20	20

Imperial Units: 1 mm = 0.039 in, 1 kN/m = 68.52 lb/ft

1. BASF HP+ Wall X Series fastening per **Section 6**.
2. Interior gypsum wallboard attached to framing with minimum 2.14-mm nail or #6 Type W screws. Minimum penetration of screws into framing is 19 mm. Fastener spacing shall be as required above.
3. Response modification coefficient, R_d, for use in seismic design throughout NBC.
4. For combinations of different types of SFRS acting in the same direction in the same storey, R_dR_o shall be taken as the lowest value of R_dR_o corresponding to these systems. See NBC Division B Article 4.1.8.9.
5. Consider the additional system restrictions in Article 4.1.8.10 of NBC Division B.
6. NL = Not Limited. Heights are maximum height limits above grade, as defined in NBC Division B Table 4.1.8.9.
7. Neopor and OSB sheathing may be laminated together but lamination is not mandatory. Ensure OSB is installed in direct contact with framing.
8. **Note:** NBC Division B Table 9.23.13.6 requires 15.9 mm thick gypsum with framing at 600 mm o.c.

5.7 Axial Loading

- 5.7.1 BASF HP+ Wall X Series will perform the same as corresponding equivalent prescriptive wall assemblies.
- 5.7.2 Designs shall have a load path capable of transferring loads from their point of origin to their final point of resistance in accordance with NBC Division C Sentence 2.2.4.3(1).

5.8 Transverse Wind Loading

- 5.8.1 BASF HP+ Wall X Series installed over exterior framing spaced at a maximum of 600 mm o.c. without an interior covering can resist specified wind loads as shown in **Table 2**. Hourly wind pressures (1-in-50) to be resisted are found in NBC Division B, Appendix C, Table C-2, for selected locations.

Table 2. Specified Wind Pressure¹

Wall Assembly ³	Maximum Stud Spacing, mm	Hourly 1-in-50 Wind Pressure, ² kPa
BASF HP+ Wall X Series	600 o.c.	2.8

Imperial Units: 1 mm = 0.039 in, 1 kPa = 20.88 psf

1. Applies to both the positive and negative directions.
2. Hourly Wind Pressure (1-in-50) for selected locations can be found in NBC Division B, Appendix C, Table C-2.
3. The attachment of the sheathing to the framing is primarily through the adhesion of the SPF to the framing and Neopor sheathing.

5.9 *Thermal Resistance*

- 5.9.1 BASF HP+ Wall X Series complies with the continuity of insulation requirements of NBC Division B Article 9.36.2.5.
- 5.9.2 BASF HP+ Wall X Series materials have the thermal resistances shown in **Table 3**.

Table 3. Thermal Resistance Properties

Product	Thickness, mm	RSI / R-Value, m ² ·K/W (ft ² ·hr·°F/Btu)
Neopor	25	0.81 (4.6)
	51	1.62 (9.2)
WALLTITE v.5	38	1.48 (8.4)

Imperial Units: 1 mm = 0.039 in, 1 m²·K/W = 5.678 hr·ft²·°F/Btu

5.10 *Air Barrier*

- 5.10.1 BASF HP+ Wall X Series components have the air-permeance properties shown in **Table 4** in accordance with NBC Division B Article 5.4.1.2 and Subsection 9.25.3.

Table 4. Air-Barrier Properties¹

Product	Air Permeance [L/(s·m ²)]
WALLTITE v.5	≤ 0.02

Imperial Units: 1 L/(s·m²) = 0.2 cfm/ft²
 1. Tested in accordance with ASTM E2178.

5.11 *Surface Burning Characteristics*

- 5.11.1 BASF HP+ Wall X Series panels have surface burning characteristics (flame spread) shown in **Table 5**.

Table 5. Flame-Spread Characteristics

Product	Flame-Spread Rating
WALLTITE v.5	≤ 500

1. Tested in accordance with CAN/ULC-S102 including CAN/ULC-S127.

5.12 *Thermal-Barrier Requirements*

- 5.12.1 Foam plastics that form part of a wall or ceiling assembly in combustible construction shall be protected from adjacent spaces in the building, other than adjacent concealed spaces within attic or roof spaces, crawl spaces, and wall and ceiling assemblies by an approved thermal barrier as required by NBC Division B Article 3.1.4.2 and 9.10.17.10.
- 5.13 Where the application falls outside of the performance evaluation, conditions of use and/or installation requirements set forth herein, alternative techniques shall be permitted in accordance with accepted engineering practice and experience. This includes but is not limited to the following areas of engineering: mechanics or materials, structural, building science and fire science.

6 Installation

- 6.1 Installation shall comply with the manufacturer installation instructions, this report, the approved construction documents and the applicable building code.
- 6.2 In the event of a conflict between the manufacturer installation instructions this report and the applicable building code, the more restrictive shall govern.
- 6.3 BASF HP+ Wall X Series shall be installed in accordance with the manufacturer published installation instructions and this report. In the event of a conflict between the manufacturer installation instructions and this report, the more restrictive shall govern.
- 6.4 WALLTITE v.5 SPF must be installed in accordance with standard CAN/ULC-S705.2, ULC Evaluation Report ER41037, and BASF Canada's Quality Assurance and Training Program (QATP) manual by installers licensed through the QATP and certified by Caliber Quality Solutions.
- 6.5 A copy of the manufacturer published installation instructions shall be available at all times on the jobsite during installation.
- 6.6 BASF HP+ Wall X Series sheathing panels must be installed over studs with a width of not less than 38 mm and spaced at a maximum of 600 mm o.c.
- 6.7 Where gypsum wallboard is required, it shall have a minimum thickness of 12.7 mm.
- 6.8 *Orientation*
 - 6.8.1 BASF HP+ Wall X Series sheathing panels must be installed vertically with the long dimension of the panels parallel to the studs and all panel edges supported by framing or blocking.
- 6.9 *Fasteners*
 - 6.9.1 *Neopor FPIS and OSB:*
 - 6.9.1.1 Minimum 3.3 mm x 89 mm nails with a minimum of 38 mm penetration into framing.
 - 6.9.2 *Gypsum Wallboard:*
 - 6.9.2.1 Where gypsum wallboard is required, it shall be installed in accordance with NBC Division B Subsection 9.29.5.
- 6.10 *Fastener Spacing*
 - 6.10.1 *Neopor FPIS and OSB:*
 - 6.10.1.1 Maximum of 150 mm o.c. along edges and 300 mm o.c. in the field.
 - 6.10.2 *Gypsum Wallboard:*
 - 6.10.2.1 For NBC Division B Part 9 applications, gypsum nail fasteners shall be spaced a maximum of 200 mm o.c. on all vertical wall supports and top and bottom plates.
 - 6.10.2.2 For NBC Division B Part 9 applications, gypsum screw fasteners shall be spaced a maximum of 300 mm o.c. on all vertical wall supports and top and bottom plates.
 - 6.10.3 For engineered design, see **Table 1**.
- 6.11 *Fastener Edge Distance*
 - 6.11.1 For NBC Division B Part 9 applications, fastener edge distance is a minimum of 10 mm for both BASF HP+ Wall X Series and gypsum board in accordance with Division B, Articles 9.29.5.8 and 9.29.5.9.

7 Substantiating Data

- 7.1 Testing has been performed under the supervision of a professional engineer and/or under the requirements of ISO/IEC 17025 as follows:
 - 7.1.1 Lateral-load testing in accordance with ASTM E2126
 - 7.1.2 Transverse wind-load testing in accordance with ASTM E330
 - 7.1.3 Uplift load testing in accordance with ASTM E72
 - 7.1.4 Gravity load testing for single top plate applications in accordance with ASTM E72
 - 7.1.5 Neopor FPIS surface burning characteristics testing in accordance with CAN/ULC-S102.2
 - 7.1.6 WALLTITE SPF surface burning characteristics testing in accordance with CAN/ULC-S102 and CAN/ULC-S127
 - 7.1.7 Neopor FPIS material property testing in accordance with CAN/ULC-S701
 - 7.1.8 WALLTITE SPF material property testing in accordance with CAN/ULC-S705.1
 - 7.1.9 WALLTITE v.5 product listing per ULC ER41037
- 7.2 Information contained herein is the result of testing and/or data analysis by sources that conform to the evaluation requirements of NBC Volume 1 Relationship of the NBC to Standards Development and Conformity Assessment and/or professional engineering regulations. DrJ relies upon accurate data to perform its ISO/IEC 17065 evaluations.
- 7.3 Where appropriate, DrJ's analysis is based on provisions that have been codified into law through provincial, territorial, or local adoption of codes and standards. The developers of these codes and standards are responsible for the reliability of published content. DrJ analysis may use code-adopted provisions as a control sample. A control sample versus a test sample establishes a product as being equivalent to that prescribed in this code in quality, strength, effectiveness, fire resistance, durability and safety.
- 7.4 The accuracy of the provisions provided herein may be reliant upon the published properties of raw materials, which are defined by the grade mark, grade stamp, mill certificate, Listings, certified reports, duly authenticated reports from approved agencies, and research reports prepared by approved agencies and/or approved sources provided by the suppliers of products, materials, designs, assemblies and/or methods of construction. These are presumed to be minimum properties and relied upon to be accurate. The reliability of DrJ's engineering practice, as contained in this report, may be dependent upon published design properties by others.
- 7.5 Testing and engineering analysis: The strength, rigidity and/or general performance of component parts and/or the integrated structure are determined by suitable tests that simulate the actual conditions of application that occur and/or by accepted engineering practice and experience.
- 7.6 Where additional condition of use and/or code compliance information is required, please search for BASF HP+ Wall X Series on the DrJ Certification website.

8 Findings

- 8.1 As delineated in **Section 3**, BASF HP+ Wall X Series has performance characteristics that were tested and/or meet pertinent standards and is suitable for use pursuant to its specified purpose.
- 8.2 When used and installed in accordance with this report and the manufacturer installation instructions, BASF HP+ Wall X Series shall be approved for the following applications:
 - 8.2.1 Lateral-load resistance due to wind and seismic loads carried by shear walls in accordance with **Table 1**.
 - 8.2.2 Transverse-wind load resistance in accordance with **Table 2**.
 - 8.2.3 Thermal resistance properties in accordance with **Table 3**.
 - 8.2.4 Air-permeance performance in accordance with **Table 4**.
 - 8.2.5 Material fire properties in accordance with **Table 5**.

- 8.3 Any application specific issues not addressed herein can be engineered by an RDP. Assistance with engineering is available from BASF Corporation.
- 8.4 This innovative product has been evaluated in the context of the codes listed in **Section 2** and is compliant with all known provincial, territorial, and local building codes. Where there are known variations in provincial, territorial, or local codes applicable to this report, they are listed here.
 - 8.4.1 No known variations
- 8.5 NBC Volume 1 Relationship of the NBC to Standards Development and Conformity Assessment:

Certification

Certification is the confirmation by an independent organization that a product, service, or system meets a requirement...Certification bodies publish lists of certified products and companies...Several organizations, including the Canadian Construction Materials Centre (CCMC), offer such evaluation services.

Evaluation

An evaluation is a written opinion by an independent professional organization that a product will perform its intended function. An evaluation is very often done to determine the ability of an innovative product, for which no standards exist, to satisfy the intent of the Code requirement...

- 8.6 ISO/IEC 17065 accredited third-party certification bodies,⁶ including but not limited to, Standards Council of Canada (SCC)⁷ and ANSI National Accreditation Board (ANAB),⁸ confirm that product certification bodies have the expertise to provide technical evaluation services within their scope of accreditation. All SCC and ANAB product certification bodies meet NBC requirements to offer evaluation services for alternative solutions.⁹
 - 8.6.1 DrJ is an ISO/IEC 17065 ANAB-Accredited Product Certification Body – Accreditation #1131¹⁰ and employs professional engineers.¹¹
- 8.7 Through ANAB accreditation and the IAF Multilateral Agreements, this report can be used to obtain innovative product approval in any jurisdiction or country that has IAF MLA Members & Signatories to meet the Purpose of the MLA – “certified once, accepted everywhere.” IAF specifically says, “Once an accreditation body is a signatory of the IAF MLA, it is required to recognise certificates and validation and verification statements issued by conformity assessment bodies accredited by all other signatories of the IAF MLA, with the appropriate scope.”¹²
- 8.8 Product certification organizations, accredited by the SCC and ANAB, are defined as equivalent evaluation services:
 - 8.8.1 Canada-United States-Mexico Agreement (CUSMA), Article 11.6 Conformity Assessment confirms mutual recognition by stating, “...each Party shall accord to conformity assessment bodies located in the territory of another Party treatment no less favorable than that it accords to conformity assessment bodies located in its own territory or in the territory of the other Party.”
 - 8.8.2 The SCC National Conformity Assessment Principles states, “SCC is a member of a number of international organizations developing voluntary conformity assessment agreements that help ensure the international acceptance of Canadian conformity assessment results. Signatories to these agreements (like SCC) recognize each other’s accreditations as being equivalent to their own.”¹³
- 8.9 Building official approval of a licensed professional engineer is performed by verifying the professional engineer and/or their business entity are listed by the engineering regulators of the relevant jurisdiction.

9 Conditions of Use

- 9.1 Material properties shall not fall outside the boundaries defined in **Section 3**.
- 9.2 As defined in **Section 3**, where material and/or engineering mechanics properties are created for load resisting design purposes, the resistance to the applied load shall not exceed the ability of the defined properties to resist those loads using the principles of accepted engineering practice.

- 9.3 As listed herein, BASF HP+ Wall X Series shall not be used where:
 - 9.3.1 Shear loads exceed values in **Table 1**, as applicable.
 - 9.3.2 Axial loads exceed values in **Section 5.7**.
 - 9.3.3 Transverse loads exceed values in **Table 2**.
- 9.4 The manufacturer installation instructions shall be available on the jobsite for inspection.
- 9.5 All panel edges shall be supported by wall framing or solid blocking with a minimum width of 38 mm.
- 9.6 Where required by regulation and enforced by the building official, also known as the authority having jurisdiction (AHJ) in which the project is to be constructed:
 - 9.6.1 Any calculations incorporated into the construction documents shall conform to accepted engineering practice, and, when prepared by an approved source, shall be approved when signed and sealed.
 - 9.6.2 This report and the installation instructions shall be submitted at the time of permit application.
 - 9.6.3 This innovative product has an internal quality control program and a third-party quality assurance program.
 - 9.6.4 At a minimum, this innovative product shall be installed per **Section 6** of this report.
 - 9.6.5 This report shall be reviewed for code compliance by the AHJ in concert with the duties and powers granted to the building official by the provincial regulations governing such duties and powers.
 - 9.6.6 The application of this innovative product in the context of this report is dependent on the accuracy of the construction documents, implementation of installation instructions, inspections, and any other regulatory requirements that may apply.
- 9.7 Design loads shall be determined in accordance with the building code adopted by the jurisdiction in which the project is to be constructed and/or by the designer (i.e., owner).
- 9.8 The actual design, suitability, and use of this report, for any particular building, is the responsibility of the owner or the authorized agent of the owner.

10 Identification

- 10.1 The innovative product listed in **Section 1.1** is identified by a label on the board or packaging material bearing the manufacturer name, product name, report number, and other information to confirm code compliance.
- 10.2 Additional technical information can be found at www.construction.basf.com.

11 Review Schedule

- 11.1 This report is subject to periodic review and revision. For the most recent version, visit drjcertification.org.
- 11.2 For information on the status of this report, contact DrJ Certification.

12 Legislation that Authorizes New Product Approval in International Markets is Found in Appendix A

- 12.1 BASF HP+ Wall X Series has been tested by an ISO/IEC 17025 accredited laboratory and/or evaluated to be in conformance with accepted engineering practice to ensure durable, livable and safe construction.
- 12.2 This report is published by an ISO/IEC 17065 accredited certification body with the expertise to evaluate products, materials, designs, services, assemblies and/or methods of construction.
- 12.3 This report meets the legislative intent and definition of a duly authenticated report, which shall be accepted by the AHJ, unless there are specific reasons why the alternative shall not be approved as provided for in writing.

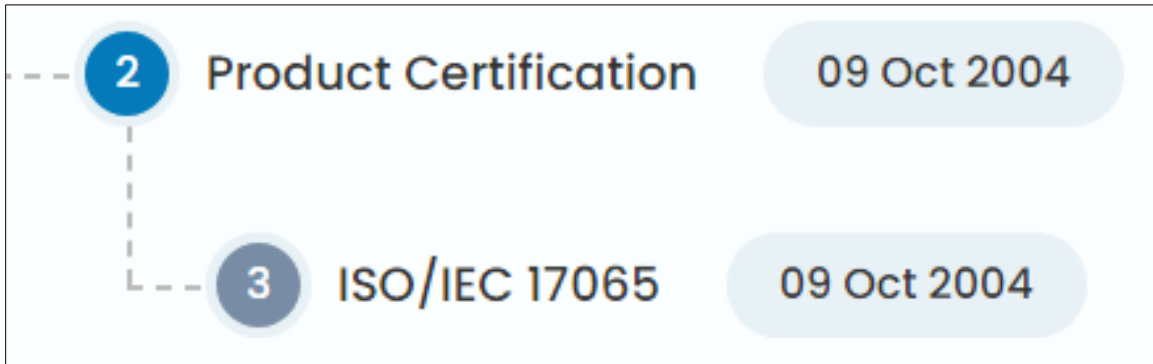
Appendix A

1 Legislation that Authorizes New Product Approval in Canada

- 1.1 The Competition Act is a Canadian federal law governing competition law in Canada. The Act contains both criminal and civil provisions aimed at preventing anti-competitive practices in the marketplace. The Act is enforced and administered by the Competition Bureau, whose regulations encourage the approval of NBC referenced and alternative products, materials, designs, services, assemblies and/or methods of construction that:
 - 1.1.1 Advance Innovation,
 - 1.1.2 Promote competition so all businesses have the opportunity to compete on price and quality in an open market on a level playing field unhampered by anticompetitive constraints, and
 - 1.1.3 Benefit consumers through lower prices, better quality, and greater choice.
- 1.2 **Approved by International Jurisdictions:** The USMCA and GATT agreements provide for approval of innovative materials, products, designs, services, assemblies and/or methods of construction through the Technical Barriers to Trade (TBT) agreements and the International Accreditation Forum (IAF) Multilateral Recognition Arrangement (MLA), where these agreements proclaim the desire of both countries to have their markets open to innovation.
- 1.3 These agreements:
 - 1.3.1 Permit participation of conformity assessment bodies located in the territories of other Members (defined as GATT Countries) under conditions no less favourable than those accorded to bodies located within their territory or the territory of any other country,
 - 1.3.2 State that conformity assessment procedures (i.e., ISO/IEC 17020, 17025, 17065, etc.) are prepared, adopted, and applied so as to grant access for suppliers of like products originating in the territories of other Members under conditions no less favourable than those accorded to suppliers of like products of national origin or originating in any other country, in a comparable situation.
 - 1.3.3 State that conformity assessment procedures are not prepared, adopted, or applied with a view to or with the effect of creating unnecessary obstacles to international trade. This means that conformity assessment procedures shall not be more strict or be applied more strictly than is necessary to give the importing Member adequate confidence that products conform to the applicable technical regulations or standards.
- 1.4 To this end, Canada operates an accreditation system as follows:



1.5 This includes ISO/IEC 17065 product certification as follows:



1.6 Similarly, the United States operates multiple accreditation processes with ANAB being the most prominent ISO/IEC 17065 product certification organization as follows:

Accreditation Body: ANAB (ANSI National Accreditation Board)
IAF MLA Signatory

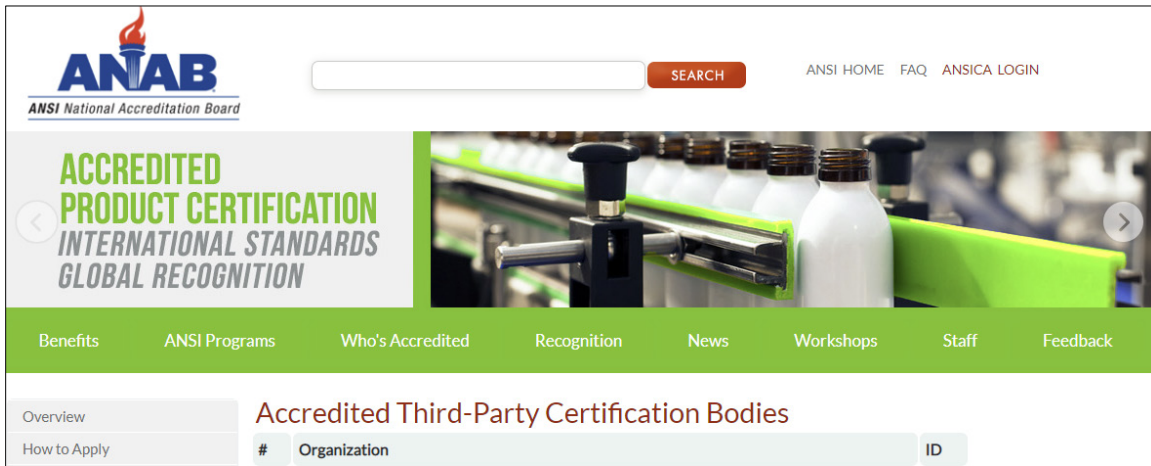
Code of Conduct Adopted: 01 Feb 2005
<http://www.anab.org>
United States of America

IAAC APAC

1.7 This includes ISO/IEC 17065 product certification as follows:



- 1.8 The list of ANAB accredited ISO/IEC 17065 product certification organizations can be found at the following link: <https://anabpd.ansi.org/Accreditation/product-certification/DirectoryListingAccredited?menuID=1&prgID=1>



- 1.9 Approval is granted via International Agreement, where the purpose of the IAF MLA is to ensure mutual recognition of accredited certification and validation/verification statements between signatories. Subsequent acceptance of accredited certification and validation/verification statements is required so that one accreditation can be used for the timely approval of innovative materials, products, designs, services, assemblies and/or methods of construction. Accreditations granted by IAF MLA signatories are recognised worldwide based on their equivalent accreditation programs, therefore reducing costs and adding value to businesses and consumers.
- 1.10 Consequently, and as one example, these agreements permit product approval of innovative Australian and New Zealand products into US markets and vice-versa.
- 1.11 Finally, questions that often arises are, “*Why do these agreements exist?*” and “*Why is the ISO/IEC 17065 accredited third-party certification process so important?*”
- 1.11.1 The answer is that all countries desire to protect the intellectual property and trade secrets of their country’s businesses.
 - 1.11.2 In the US this protection is provided by 18 U.S. Code § 1831 Under Economic Espionage, where it states “*whoever, intending or knowing that the offense will benefit any foreign government, foreign instrumentality, or foreign agent, knowingly steals, or without authorization appropriates, takes, carries away, or conceals, or by fraud, artifice, or deception obtains a trade secret shall be fined not more than \$5,000,000 or imprisoned not more than 15 years, or both.*”
 - 1.11.3 Any organization that commits any offense described shall be fined not more than the greater of \$10,000,000 or three (3) times the value of the stolen trade secret to the organization, including expenses for research and design and other costs of reproducing the trade secret that the organization has thereby avoided.¹⁴
 - 1.11.4 Protection of intellectual property and trade secrets reinforces the value of the IAF MLA, the GATT/TBT and the ISO/IEC 17065 product approval process.
 - 1.11.5 The goal is to protect everyone’s best interests while also facilitating economic freedom and opportunity by promoting free and fair competition in the marketplace.

Notes

- ¹ For more information, visit drjcertification.org or call us at 608-310-6748.
- ² Unless otherwise noted, all references in this report are from the 2020 version of the NBC. This alternative solution is also approved for use with the 2010 and 2015 NBC and the standards referenced therein.
- ³ References in this report to the National Building Code of Canada (NBC) apply to the Ontario Building Code (OBC), unless noted otherwise.
- ⁴ 18 U.S. Code § 1831 - Economic espionage - Whoever, intending or knowing that the offense will benefit any foreign government, foreign instrumentality, or foreign agent, knowingly steals, or without authorization appropriates, takes, carries away, or conceals, or by fraud, artifice, or deception obtains a trade secret shall be fined not more than \$5,000,000 or imprisoned not more than 15 years, or both. Any organization that commits any offense described shall be fined not more than the greater of \$10,000,000 or 3 times the value of the stolen trade secret to the organization, including expenses for research and design and other costs of reproducing the trade secret that the organization has thereby avoided.
<https://www.law.cornell.edu/uscode/text/18/part-11/chapter-90>.
- ⁵ ANAB is part of the [USMCA](#) and [IAF MLA](#), where the purpose of these agreements are to ensure mutual recognition of accredited certification and validation/verification statements between agreement signatories, and subsequent acceptance of ANAB accredited certification and validation/verification statements by professional engineers based upon having one universal approval process for the timely approval of innovative materials, products, designs, services, assemblies and/or methods of construction.
<https://anabpd.ansi.org/Accreditation/product-certification/DirectoryListingAccredited?menuID=1&prgID=1>
- ⁷ https://iaf.nu/en/member-details/?member_id=91
- ⁸ https://iaf.nu/en/member-details/?member_id=14
- ⁹ NBC Division A Clause A-1.2.1.1.(1)(b) provides information on code compliance via alternative solutions and defines alternative solutions as "...*achieving*] at least the minimum level of performance required by Division B." NBC Division C Section 2.3 includes additional guidance for documentation of alternative solutions.
- ¹⁰ <https://anabpd.ansi.org/Accreditation/product-certification/AIIDirectoryDetails?&prgID=1&OrgId=2125&statusID=4>
- ¹¹ Through ANAB accreditation and the [IAF MLA](#), DrJ certification can be used to obtain material, product, design, or method of construction approval in any jurisdiction or country that has [IAF MLA Members & Signatories](#) to meet the [Purpose of the MLA](#) – "certified once, accepted everywhere".
- ¹² <https://iaf.nu/en/about-iaf-mla/#:~:text=required%20to%20recognise>
- ¹³ The National Conformity Assessment Principles states, "Product regulations and standards may vary from country to country. If these are set arbitrarily, they could be deemed as protectionist. The [World Trade Organization \(WTO\) Agreement on Technical Barriers to Trade \(TBT Agreement\)](#) is intended to ensure that technical regulations, standards and conformity assessment procedures of member countries do not create unnecessary obstacles to trade. Under the TBT Agreement, members of the WTO agree to use international standards, including conformity assessment standards and guides, as a basis for their technical requirements."
- ¹⁴ <https://www.law.cornell.edu/uscode/text/18/part-11/chapter-90>