

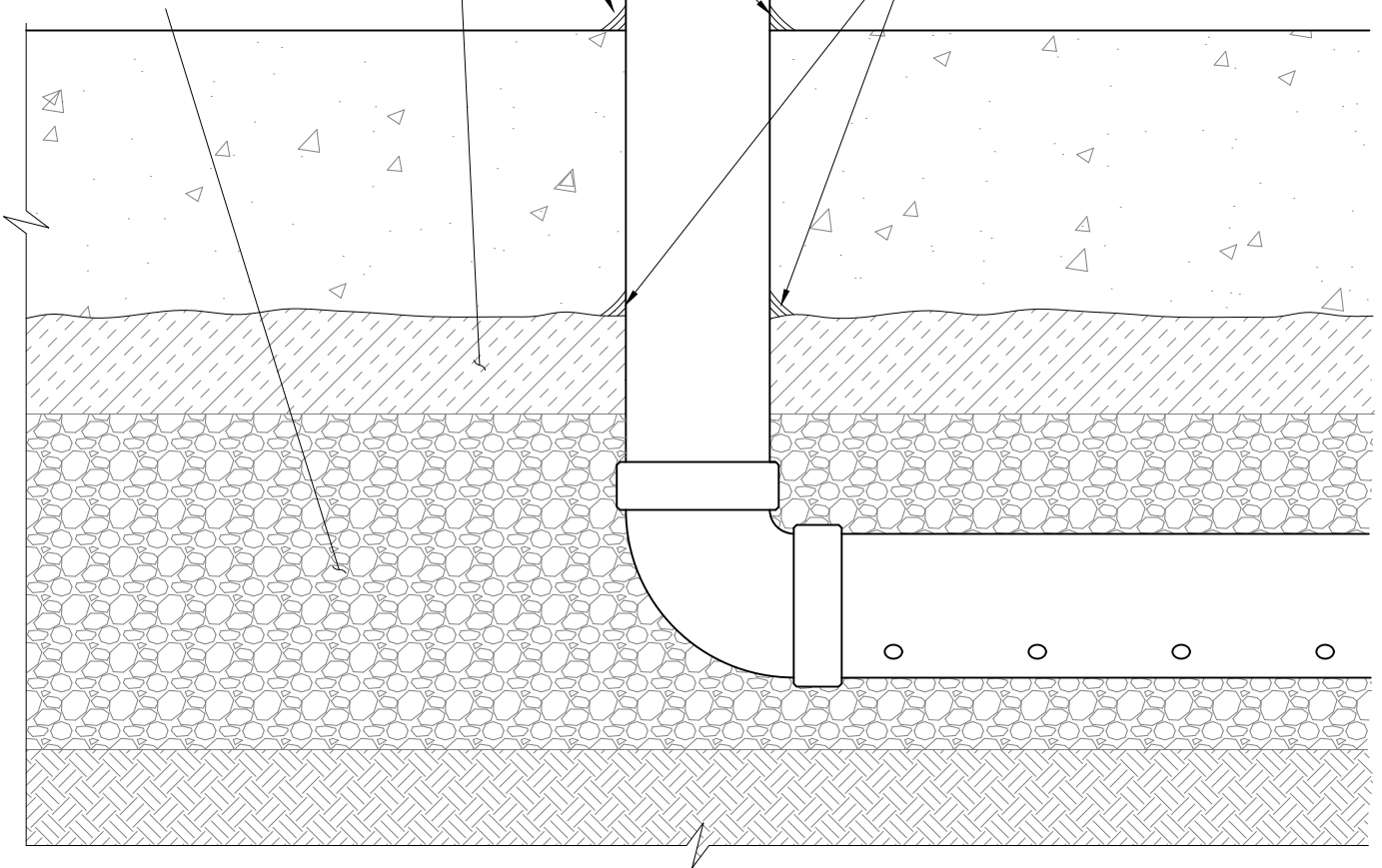
OUTLET CONNECTED TO  
DE-PRESSURIZATION  
EQUIPMENT (BY-OTHERS)

MASTERSEAL NP-1  
CONTINUOUSLY APPLIED  
AROUND PIPE/SLAB JUNCTION

MIN. 2" SPRAY APPLIED  
POLYURETHANE FOAM  
INSULATION (WALLTITE®)  
APPLIED TO COMPACTED  
LAYER (REFER TO NOTE 1)

GAS PERMEABLE LAYER  
(GRAVEL)

MASTERSEAL NP-1  
CONTINUOUSLY APPLIED  
AROUND PIPE/SPRAY FOAM  
JUNCTION



NOTE 1: THE APPLICATION OF SPRAY APPLIED POLYURETHANE FOAM INSULATION TO THE UNDERSIDE OF FLOOR SLABS SHOULD NOT BE USED IN A STRUCTURAL CAPACITY WITHOUT THE REVIEW AND ANALYSIS OF A DESIGN PROFESSIONAL.

## PIPE AND PENETRATION DETAIL



**WALLTITE®**

BASF Canada  
[www.walltite.com](http://www.walltite.com)  
1-866-474-3538

Drawing No.: <b>A5.101</b>	Scale: <b>3"=1'-0"</b>	Project No.: <b>1113608.00</b>	Date: <b>AUG '17</b>	Design:	Drawn: <b>JL</b>	Reviewed: <b>DF</b>
-------------------------------	---------------------------	-----------------------------------	-------------------------	---------	---------------------	------------------------

MASTERSEAL CR190  
CONTINUOUSLY APPLIED  
IN SAW CUT

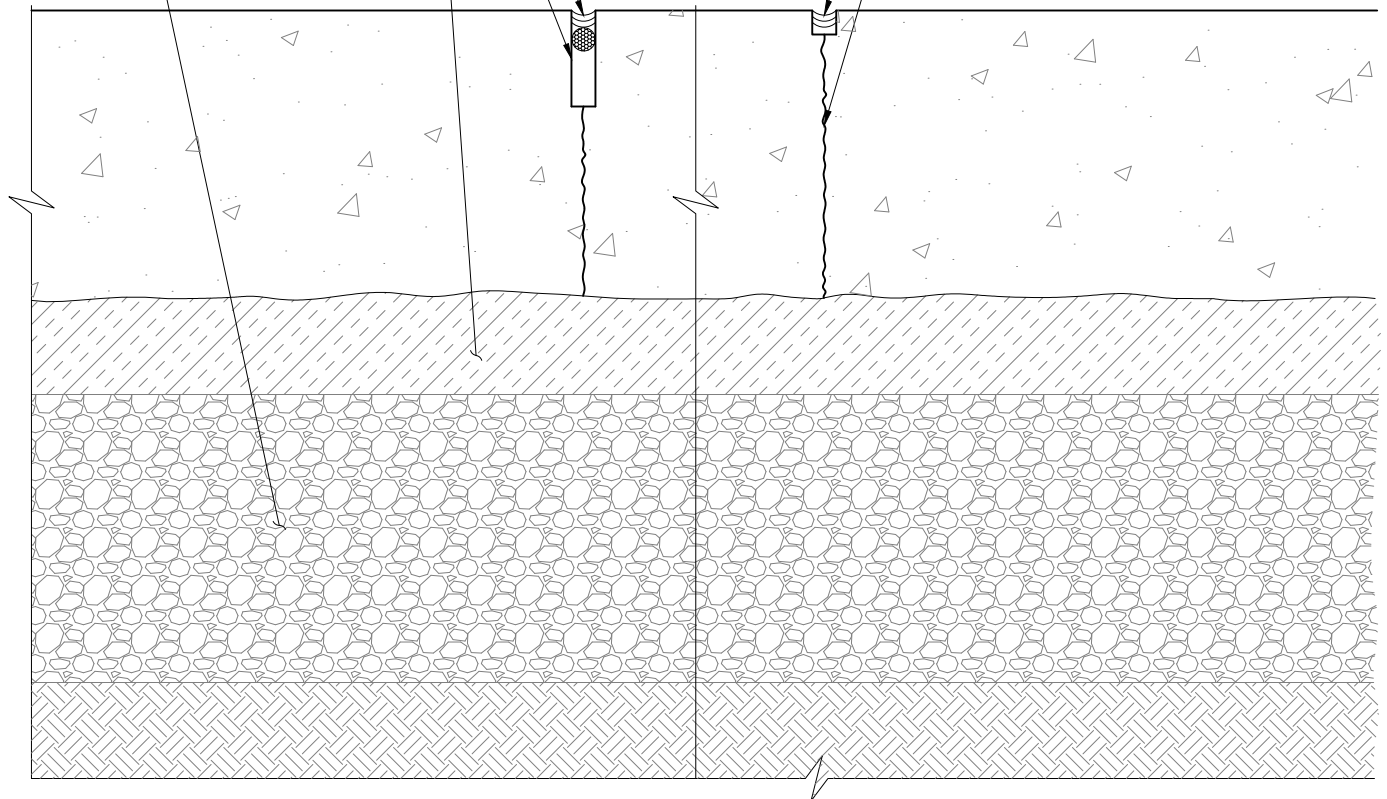
CONTROL JOINT/SAW CUT

MIN. 2" SPRAY APPLIED  
POLYURETHANE FOAM  
INSULATION (WALLTITE®)  
APPLIED TO COMPACTED  
LAYER (REFER TO NOTE 1)

GAS PERMEABLE LAYER  
(GRAVEL)

MASTERSEAL NP-1  
SEALANT CONTINUOUSLY  
APPLIED IN REGLET

CONSTRUCTION JOINT



NOTE 1: THE APPLICATION OF SPRAY APPLIED POLYURETHANE FOAM INSULATION TO THE UNDERSIDE OF FLOOR SLABS SHOULD NOT BE USED IN A STRUCTURAL CAPACITY WITHOUT THE REVIEW AND ANALYSIS OF A DESIGN PROFESSIONAL.

## SAW CUTS AND SLAB JOINTS



**WALLTITE®**

BASF Canada  
[www.walltite.com](http://www.walltite.com)  
1-866-474-3538

Drawing No.: A5.102	Scale: 3"=1'-0"	Project No.: 1113608.00	Date: AUG '17	Design:	Drawn: JL	Reviewed: DF
------------------------	--------------------	----------------------------	------------------	---------	--------------	-----------------

OUTLET CONNECTED TO  
DE-PRESSURIZATION  
EQUIPMENT (BY-OTHERS)

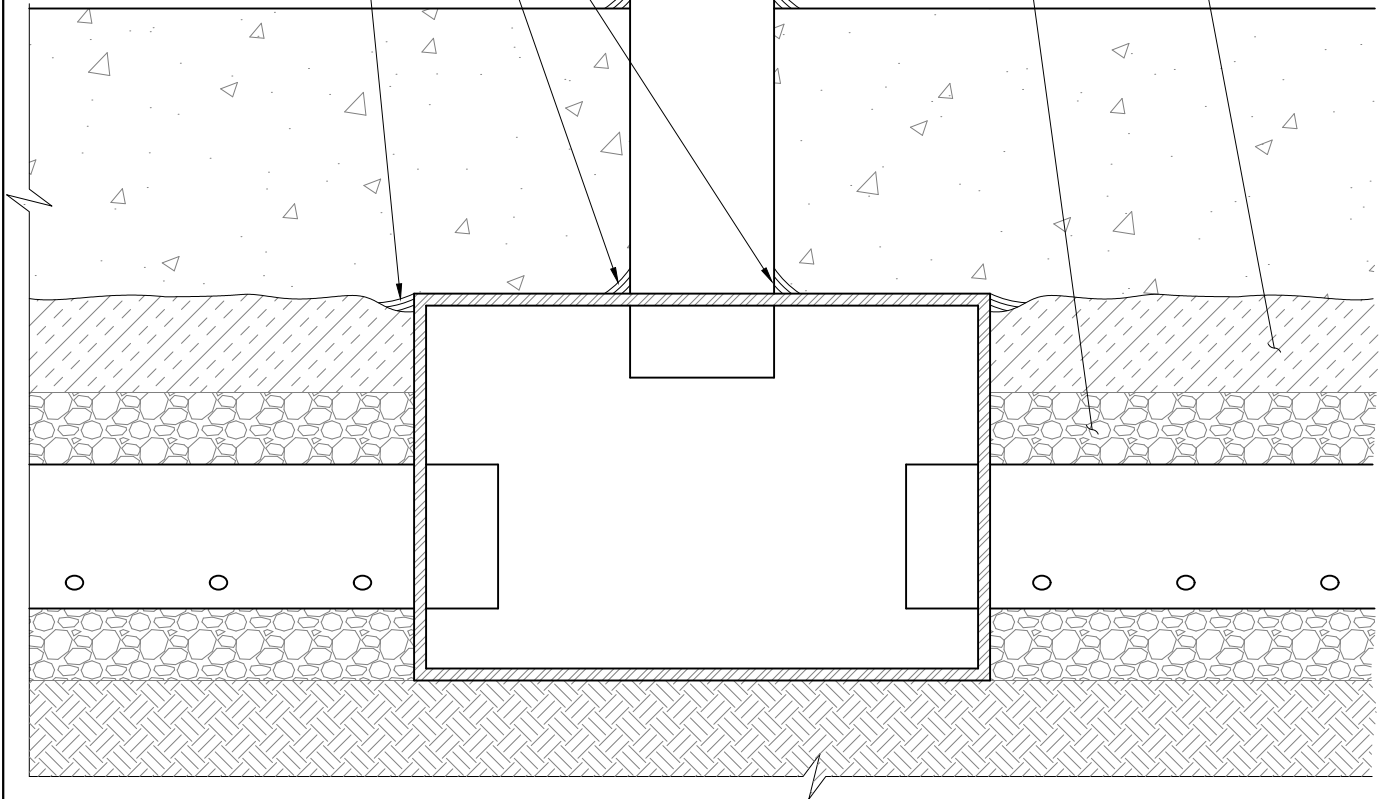
MASTERSEAL NP-1  
CONTINUOUSLY APPLIED  
AROUND PIPE/SLAB JUNCTION

MASTERSEAL NP-1  
CONTINUOUSLY APPLIED  
AROUND SUCTION PIT/PIPE  
JUNCTION

MASTERSEAL NP-1  
CONTINUOUSLY APPLIED  
AROUND SUCTION  
CAGE/SPRAY FOAM  
JUNCTION

MIN. 2" SPRAY APPLIED  
POLYURETHANE FOAM  
INSULATION (WALLTITE®)  
APPLIED TO COMPACTED  
LAYER (REFER TO NOTE 1)

GAS PERMEABLE  
LAYER (GRAVEL)



NOTE 1: THE APPLICATION OF SPRAY APPLIED POLYURETHANE FOAM INSULATION TO THE UNDERSIDE OF FLOOR SLABS SHOULD NOT BE USED IN A STRUCTURAL CAPACITY WITHOUT THE REVIEW AND ANALYSIS OF A DESIGN PROFESSIONAL.

## SUCTION PIT



**WALLTITE®**

**BASF Canada**  
[www.walltite.com](http://www.walltite.com)  
1-866-474-3538

Drawing No.: <b>A5.102</b>	Scale: <b>3"=1'-0"</b>	Project No.: <b>1113608.00</b>	Date: <b>AUG '17</b>	Design:	Drawn: <b>JL</b>	Reviewed: <b>DF</b>
-------------------------------	---------------------------	-----------------------------------	-------------------------	---------	---------------------	------------------------

GASKET BETWEEN  
BASE PLATE  
AND CONCRETE

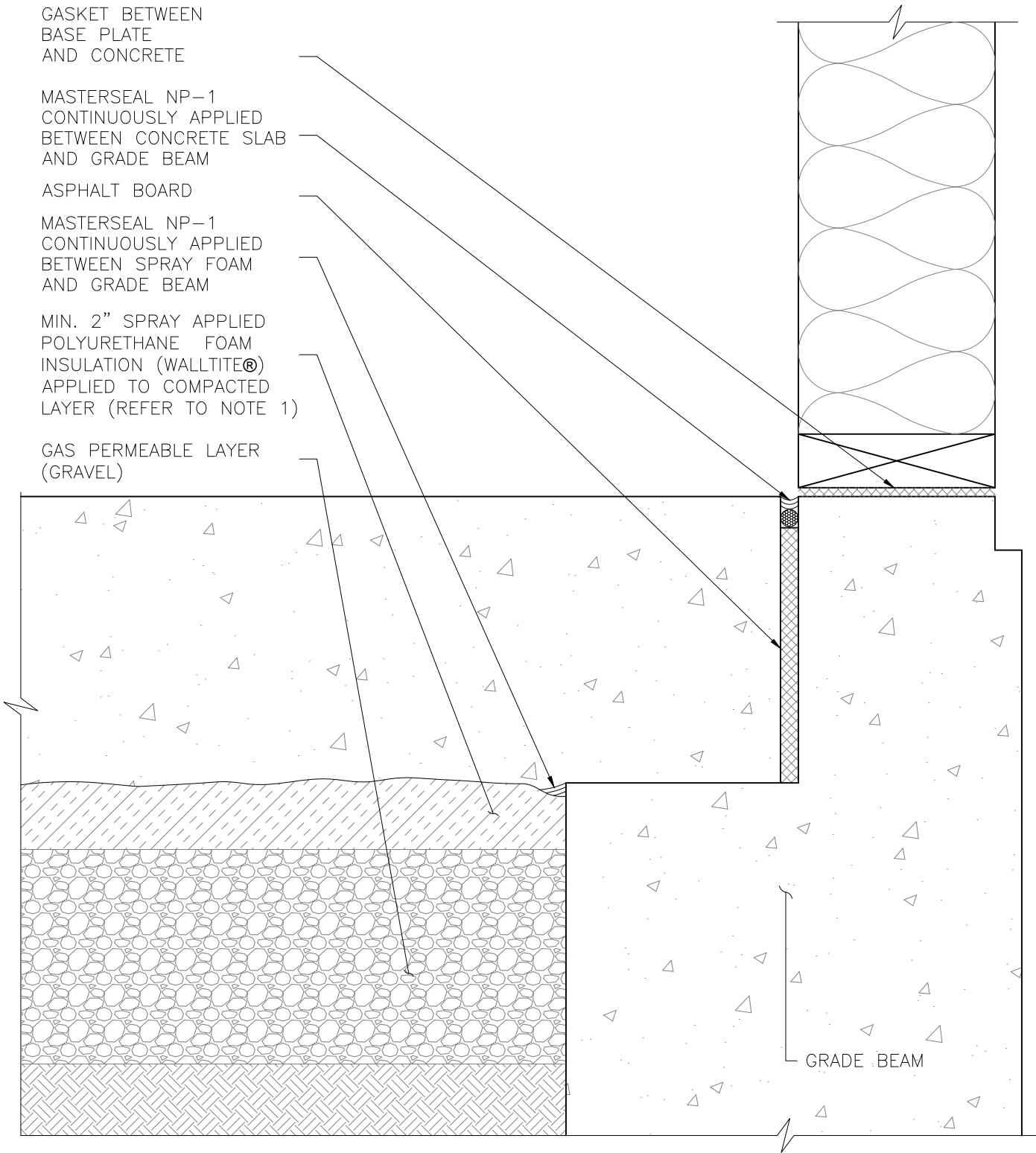
MASTERSEAL NP-1  
CONTINUOUSLY APPLIED  
BETWEEN CONCRETE SLAB  
AND GRADE BEAM

ASPHALT BOARD

MASTERSEAL NP-1  
CONTINUOUSLY APPLIED  
BETWEEN SPRAY FOAM  
AND GRADE BEAM

MIN. 2" SPRAY APPLIED  
POLYURETHANE FOAM  
INSULATION (WALLTITE®)  
APPLIED TO COMPACTED  
LAYER (REFER TO NOTE 1)

GAS PERMEABLE LAYER  
(GRAVEL)



NOTE 1: THE APPLICATION OF SPRAY APPLIED POLYURETHANE FOAM INSULATION TO THE UNDERSIDE OF FLOOR SLABS SHOULD NOT BE USED IN A STRUCTURAL CAPACITY WITHOUT THE REVIEW AND ANALYSIS OF A DESIGN PROFESSIONAL.

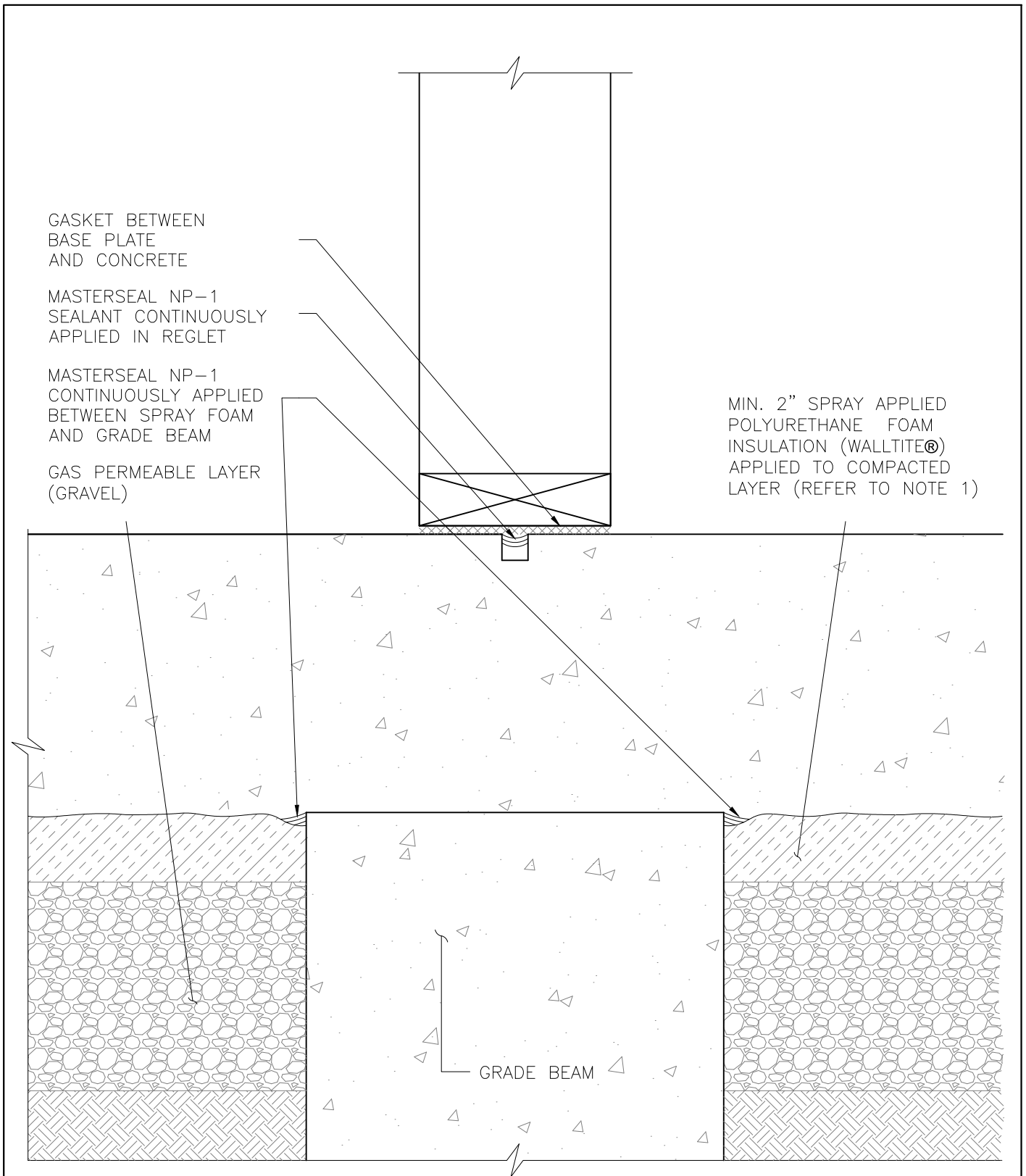
## GRADE BEAM/WALL JUNCTION



**WALLTITE®**

**BASF Canada**  
[www.walltite.com](http://www.walltite.com)  
1-866-474-3538

Drawing No.: <b>A5.103</b>	Scale: <b>3"=1'-0"</b>	Project No.: <b>1113608.00</b>	Date: <b>AUG '17</b>	Design:	Drawn: <b>JL</b>	Reviewed: <b>DF</b>
-------------------------------	---------------------------	-----------------------------------	-------------------------	---------	---------------------	------------------------



NOTE 1: THE APPLICATION OF SPRAY APPLIED POLYURETHANE FOAM INSULATION TO THE UNDERSIDE OF FLOOR SLABS SHOULD NOT BE USED IN A STRUCTURAL CAPACITY WITHOUT THE REVIEW AND ANALYSIS OF A DESIGN PROFESSIONAL.

**GRADE BEAM WITH WALL**

Drawing No.: **A5.104**

Scale: **3"=1'-0"**

Project No.: **1113608.00**

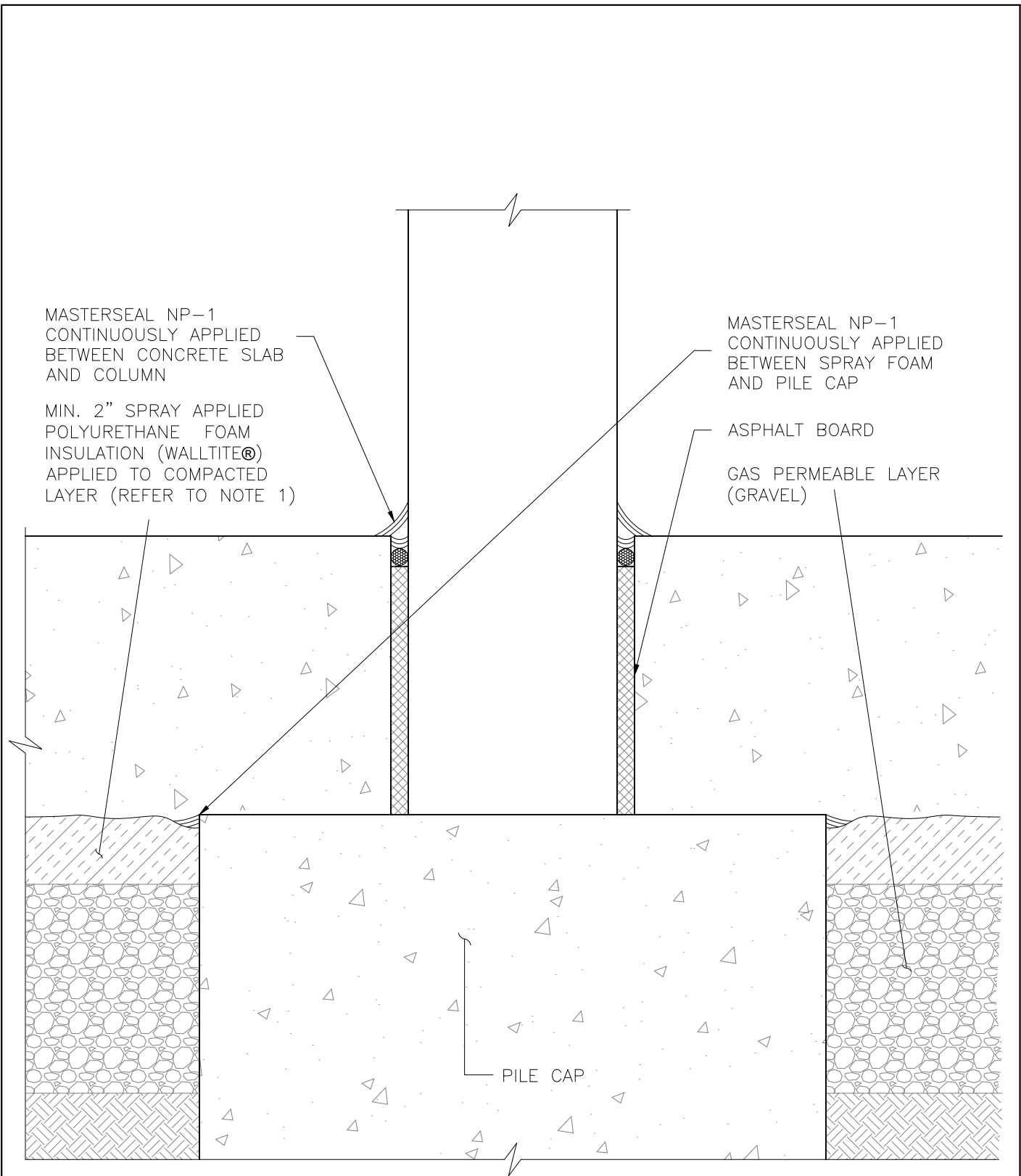
**BASF Canada**  
 **WALLTITE®** [www.walltite.com](http://www.walltite.com)  
**1-866-474-3538**

Date: **AUG '17**

Design: \_\_\_\_\_

Drawn: **JL**

Reviewed: **DF**



NOTE 1: THE APPLICATION OF SPRAY APPLIED POLYURETHANE FOAM INSULATION TO THE UNDERSIDE OF FLOOR SLABS SHOULD NOT BE USED IN A STRUCTURAL CAPACITY WITHOUT THE REVIEW AND ANALYSIS OF A DESIGN PROFESSIONAL.

**PILE CAP/COLUMN**


**BASF Canada**  
**WALLTITE®** [www.walltite.com](http://www.walltite.com)  
**1-866-474-3538**

Drawing No.: <b>A5.105</b>	Scale: <b>3"=1'-0"</b>	Project No.: <b>1113608.00</b>	Date: <b>AUG '17</b>	Design:	Drawn: <b>JL</b>	Reviewed: <b>DF</b>
----------------------------	------------------------	--------------------------------	----------------------	---------	------------------	---------------------