



 **BASF**

We create chemistry



**WALLTITE**<sup>®</sup>  
MD

# WALLTITE<sup>®</sup> CM01

Meeting Tomorrow's Code  
Requirements Today

# WALLTITE® CM01

## MEETING TOMORROW'S CODE REQUIREMENTS TODAY

We create chemistry for a sustainable future. BASF is helping lead the January, 2021 regulatory phaseout of hydrofluorocarbons (HFCs) with the introduction of CM01. Using blowing agents based on hydrofluoroolefins (HFOs) with lower global warming potential (GWP) compared to HFCs, WALLTITE CM01 is the next generation of spray foam insulation.

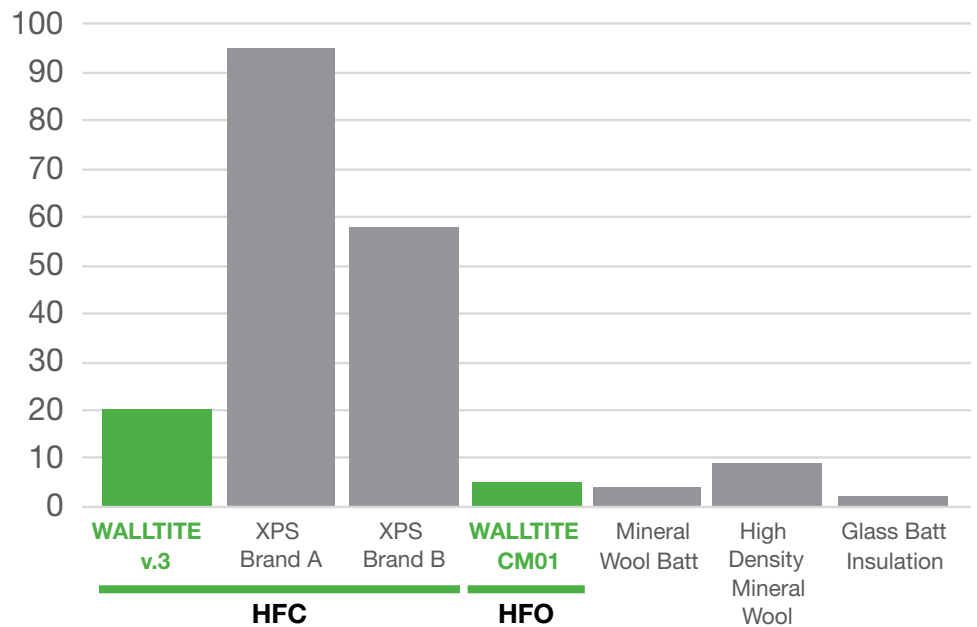
### WHAT IS GLOBAL WARMING POTENTIAL?

#### The Global Warming

**Potential** was developed to allow comparisons of the global warming impact of different gases. The larger the GWP, the more that a given gas warms the Earth compared to carbon dioxide (CO<sub>2</sub>) over that time period.

WALLTITE CM01 uses a low GWP (<1) blowing agent based on HFO chemistry. By changing to HFO chemistry, we are reducing the global warming impact.

### GWP [KG CO<sub>2</sub>] OF DIFFERENT INSULATIONS



Note 1: GWP evaluated cradle to grave

Note 2: Values are based on data sourced from publicly available environmental product declarations (EPDs).

## BENEFITS OF WALLTITE



**Offers space efficiency** due to a high R-value/inch



**Strongly adheres and conforms** to typical construction substrates (rough and smooth surfaces)



**Excellent air sealing ability** expands while being installed: creating an effective air and vapour barrier, and reduces air leakages

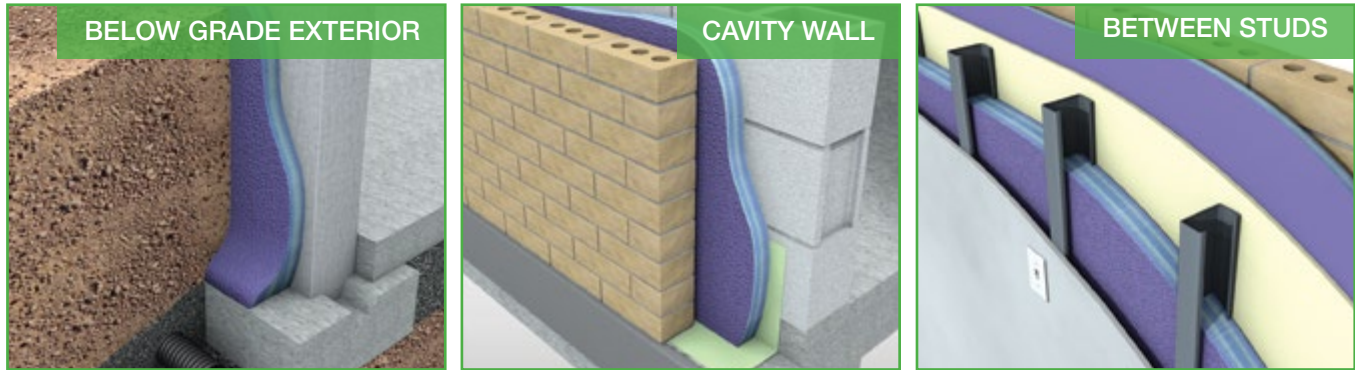


**Delivers benefits of continuous insulation** (where applicable)



# APPLICATIONS

WALLTITE® can be used in a variety of applications, including the following:



## LONG-TERM THERMAL RESISTANCE (LTTR) OF WALLTITE CM01

TEST METHOD: CAN/ULC-S770-09

THICKNESS mm (inches)	R VALUE ft <sup>2</sup> hr • °F / BTU	RSI m <sup>2</sup> • K/W
50.0 (1.97)	10.3	1.82
50.8 (2.00)	10.5	1.85
63.5 (2.50)	13.5	2.37
75.0 (2.95)	16.1	2.83
76.2 (3.00)	16.4	2.88
88.9 (3.50)	19.3	3.39
100.0 (3.94)	21.8	3.84
102.0 (4.00)	22.1	3.90

LTTR – The design thermal resistance of an insulation product containing a gas or mixture of gases, measured or predicted at standard laboratory conditions equivalent to thermal resistance resulting from gas exchange with ambient air after storage for 5 years at these conditions (from CAN/ULC S770). The WALLTITE CM01 LTTR was determined in accordance with CAN/ULC-S770-09, “Determination of Long-Term Thermal Resistance of Closed-Cell Thermal Insulating Foams,” which is referenced in CAN/ULC-S705.1-15. This is a more complex procedure than CAN/ULC-S770-03, which is an earlier version referenced in CAN/ULC-S705.1-01.<sup>1</sup>

<sup>1</sup> Evaluation Listing CCMC 14100-L WALLTITE CM01, National Research Council of Canada, ISSN 1206-1220

## UNDERSTANDING THE CERTIFICATIONS

### ECOLOGO®

ECOLOGO products are third-party certified for reduced environmental impact of specific attributes.



### GREENGUARD® Certifications

GREENGUARD and GREENGUARD Gold are third-party emission standards testing to help reduce the risk of indoor air pollution and the risk of chemical exposure. GREENGUARD Gold helps ensure products are acceptable for use in environments like schools and healthcare facilities.





We create chemistry

**For more information  
visit WALLTITE:**

**[www.walltite.com](http://www.walltite.com)**

**1-866-474-3538**

WALLTITE® is a registered trademark of BASF Canada.

ECOLOGO® certifications are certified by UL Environment.

GREENGUARD® and GREENGUARD® Gold certifications are certified by UL Environment.

GreenCircle® is certified by GreenCircle Certified, LLC.

Data presented in this document is based on tests and information, which we believe to be reliable. This document is provided for information purposes only and without any representation, warranty or condition, expressed or implied, regarding its accuracy or completeness. Whether or not this data is used or relied upon is within the sole discretion and judgement of user. Since BASF Canada Inc. has no control over the conditions of handling, storage, use and disposal of the products, BASF Canada Inc. does not assume any responsibility or liability and expressly disclaims all liability for any claim, loss, damage, injury or expense resulting therefrom.

