

GENERAL NOTES:

1. THESE GENERIC DETAILS ARE TO CONFORM TO 'In-Situ Performance Evaluation of Exterior Insulation Basement System - Spray Polyurethane Foam', Swinton et. al., NRC, Internal Report No. 820, 2000, FOR THE APPLICATION OF MEDIUM DENSITY POLYURETHANE SPRAY FOAM FOR BELOW GRADE APPLICATIONS SUCH AS THERMAL RESISTANCE, PROTECTION FROM MOISTURE IN THE GROUND, AND PROTECTION FROM ADHERING SOILS DUE TO FROST.
2. ALL MATERIALS AND DIMENSIONS ARE GENERIC UNLESS STATED IN THE DETAILS TO MEET THE FUNCTIONAL REQUIREMENTS IN THE FOLLOWING TABLE.
3. THESE GENERIC DETAILS ARE TO SHOW HOW WALLTITE® SPRAY FOAM INSULATION CAN MEET THE FUNCTIONAL REQUIREMENTS OF SECTION 5.3, 5.4, 5.5, 5.8.2, 9.13.2, 9.13.4, 9.25.2 , 9.25.3 and 9.25.4 OF THE 2010 NBC AS LISTED IN THE FOLLOWING TABLE.

Materials Providing Functional Requirement				
Envelope Element	Thermal Resistance (5.3, 9.25.2)	Protection from Moisture in the Ground (5.8.2, 9.13.2)	Vapor Barrier (5.5, 9.25.4)	Air Barrier System and Soil Gas Control (5.4, 9.13.4, 9.25.3)
Below Grade Beams	WALLTITE®	WALLTITE®	WALLTITE®	N/A
Foundation Walls	WALLTITE®	WALLTITE®	WALLTITE®	N/A
Floor Slabs	WALLTITE®	WALLTITE®	WALLTITE®	WALLTITE® & SEALANT

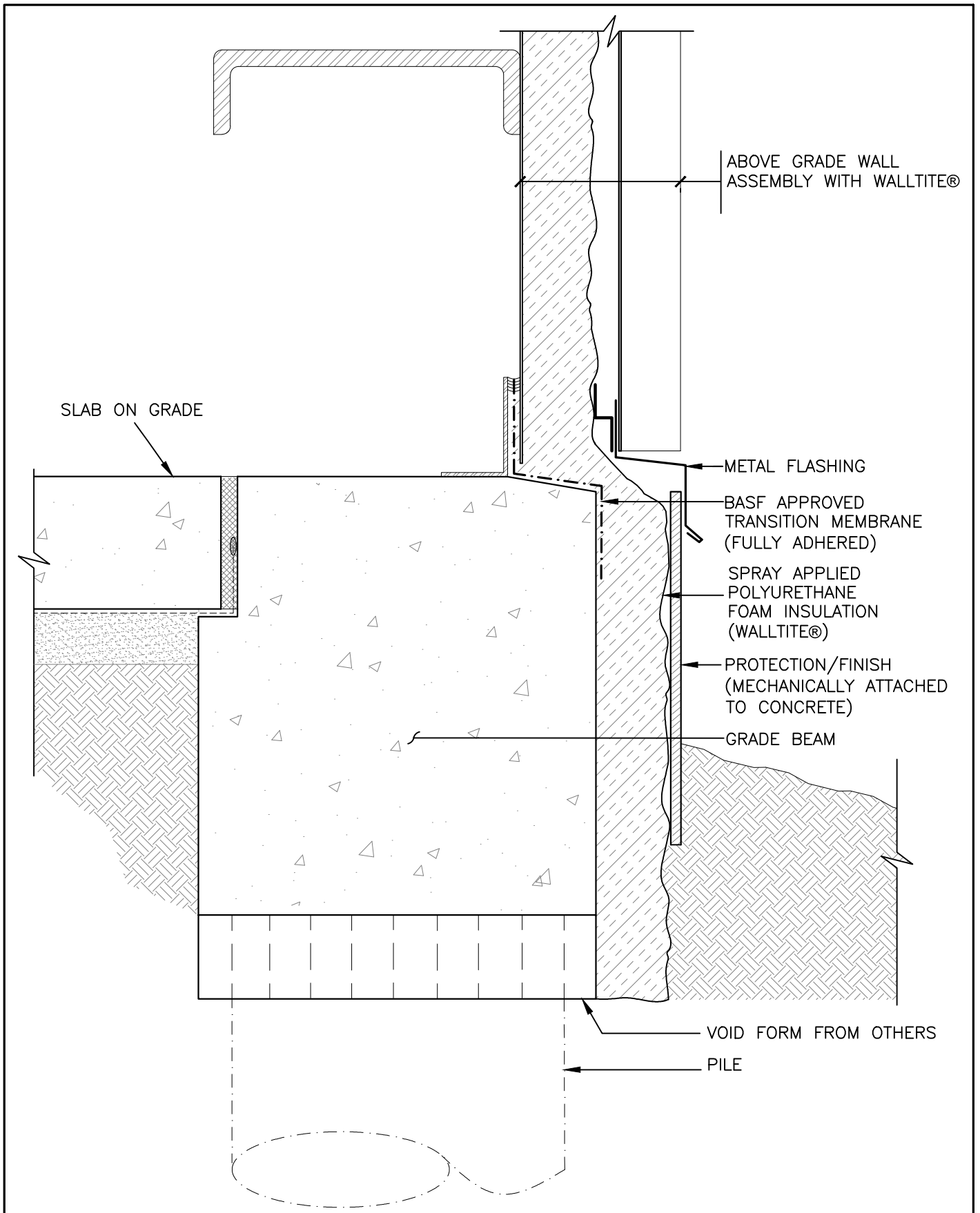
*The application of spray applied polyurethane foam insulation to the underside of floor slabs should not be used in a structural capacity without the review and analysis of a design professional.

GENERAL NOTES



BASF Canada
www.walltite.com
 1-866-474-3538

Drawing No.: A1.100	Scale: 3"=1'-0"	Project No.: 1113608.00	Date: MAY 14	Design: PR	Drawn: LA	Reviewed: PR
---------------------	-----------------	-------------------------	--------------	------------	-----------	--------------

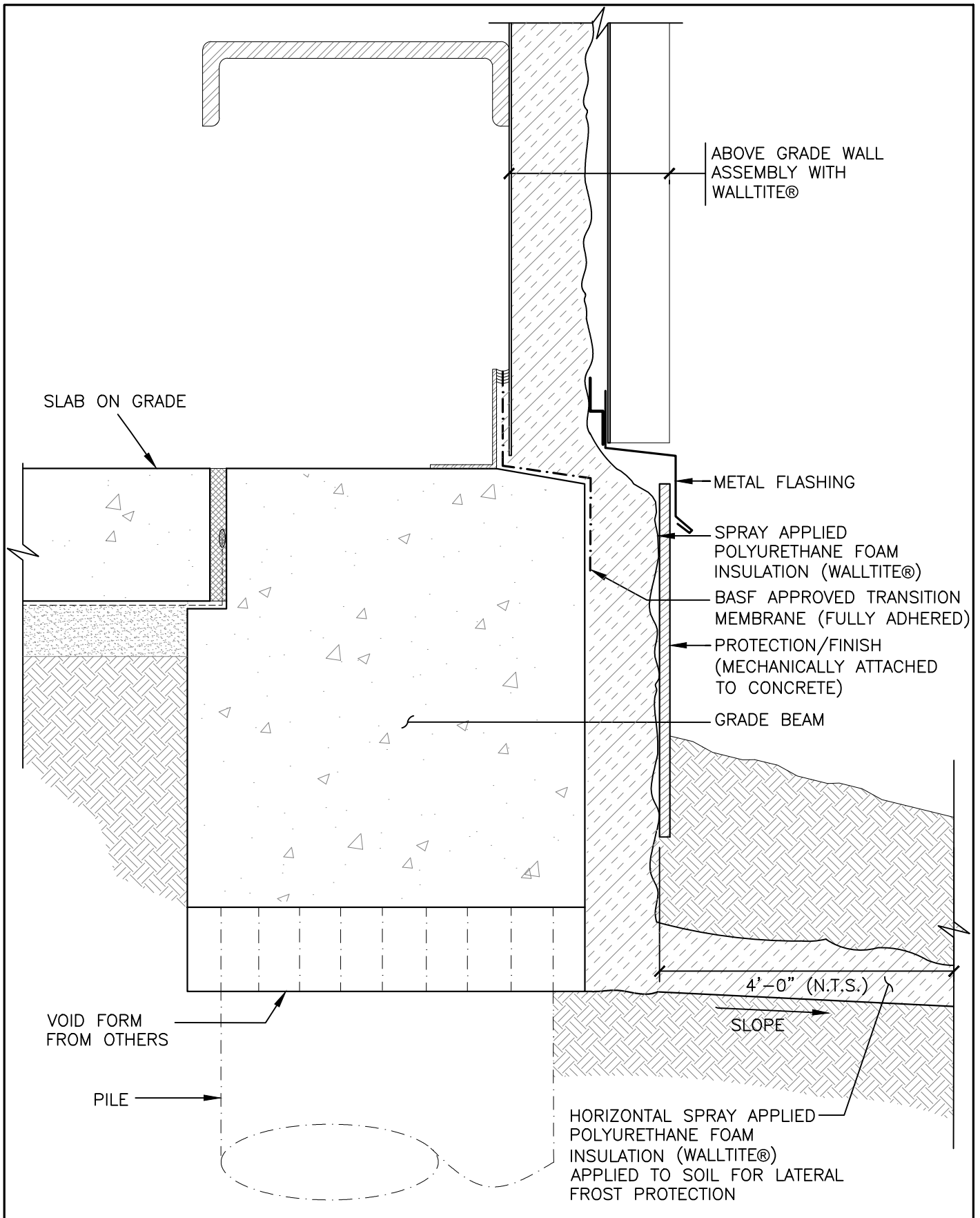


BELOW GRADE BEAM WITH
EXTERIOR INSULATION AT VERTICAL FACE



BASF Canada
www.walltite.com
 1-866-474-3538

Drawing No.: A5.101	Scale: 3"=1'-0"	Project No.: 1113608.00	Date: MAY 14	Design: PR	Drawn: LA	Reviewed: PR
------------------------	--------------------	----------------------------	-----------------	---------------	--------------	-----------------

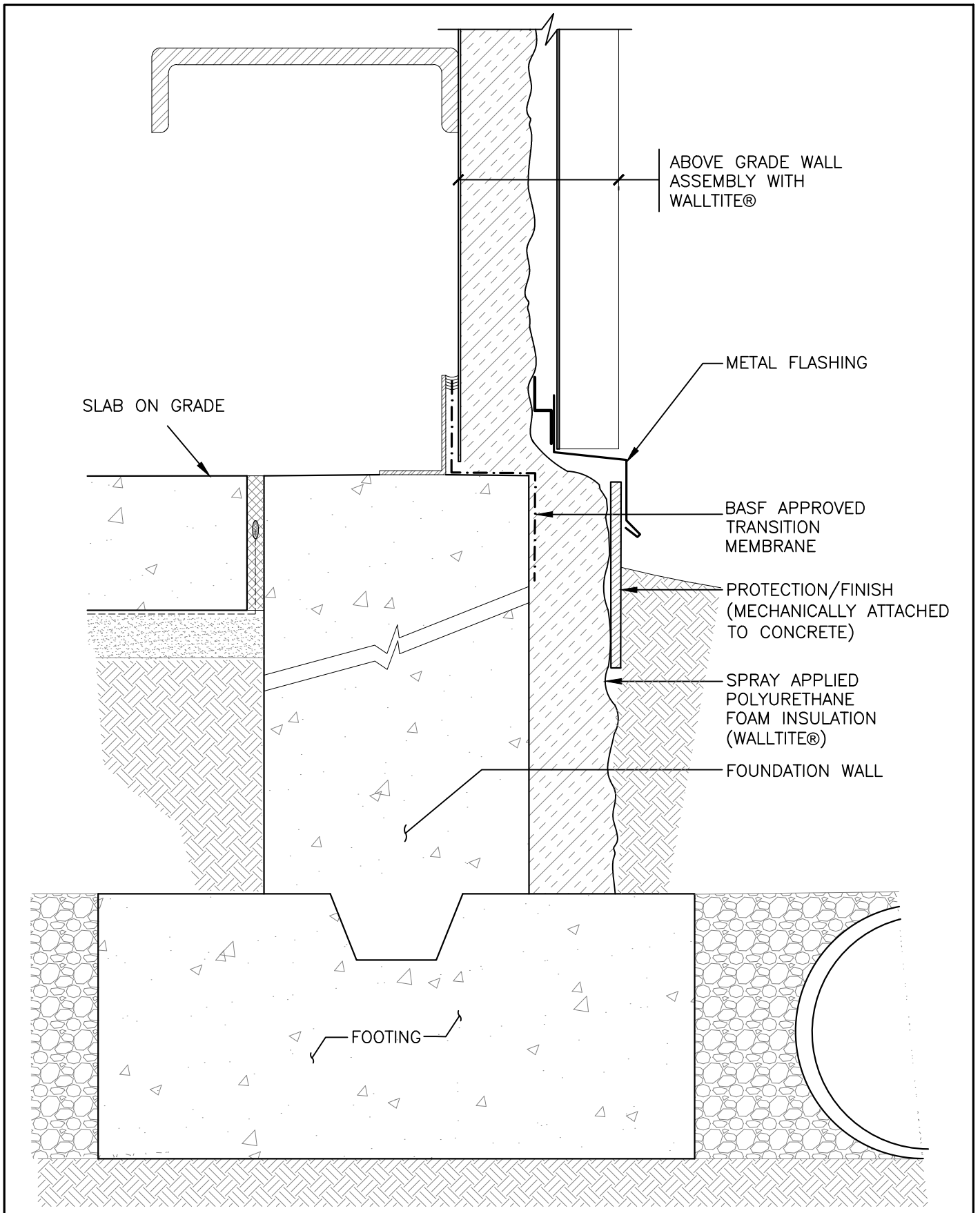


BELOW GRADE BEAM WITH EXTERIOR INSULATION AT VERTICAL FACE & EXTENSION



BASF Canada
WALLTITE® www.walltite.com
 1-866-474-3538

Drawing No.: A5.102	Scale: 3"=1'-0"	Project No.: 1113608.00	Date: MAY 14	Design: PR	Drawn: LA	Reviewed: PR
------------------------	--------------------	----------------------------	-----------------	---------------	--------------	-----------------

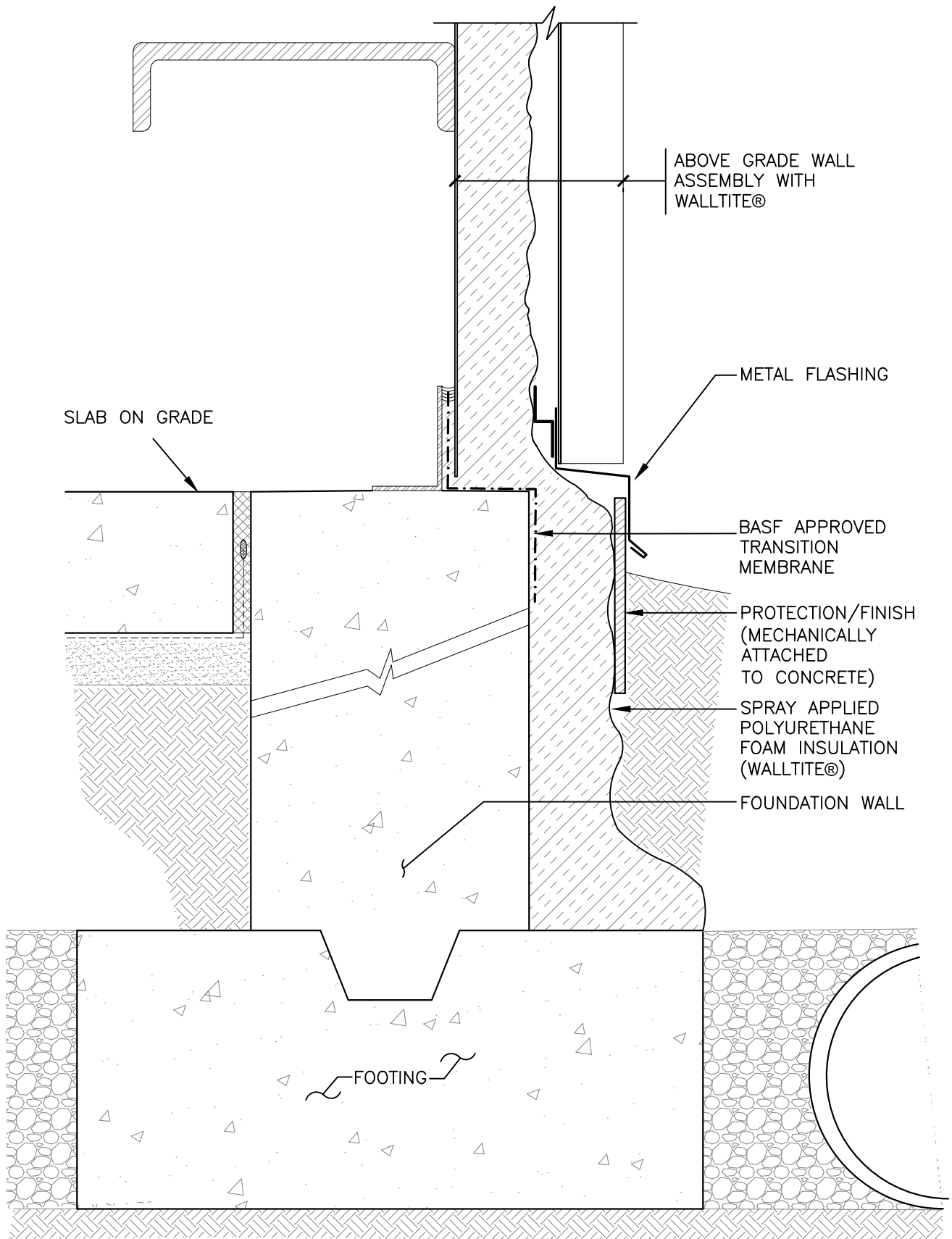


EXTERIOR INSULATED FOUNDATION WALLS



BASF Canada
www.walltite.com
 1-866-474-3538

Drawing No.: A5.103	Scale: 3"=1'-0"	Project No.: 1113608.00	Date: MAY 14	Design: PR	Drawn: LA	Reviewed: PR
------------------------	--------------------	----------------------------	-----------------	---------------	--------------	-----------------

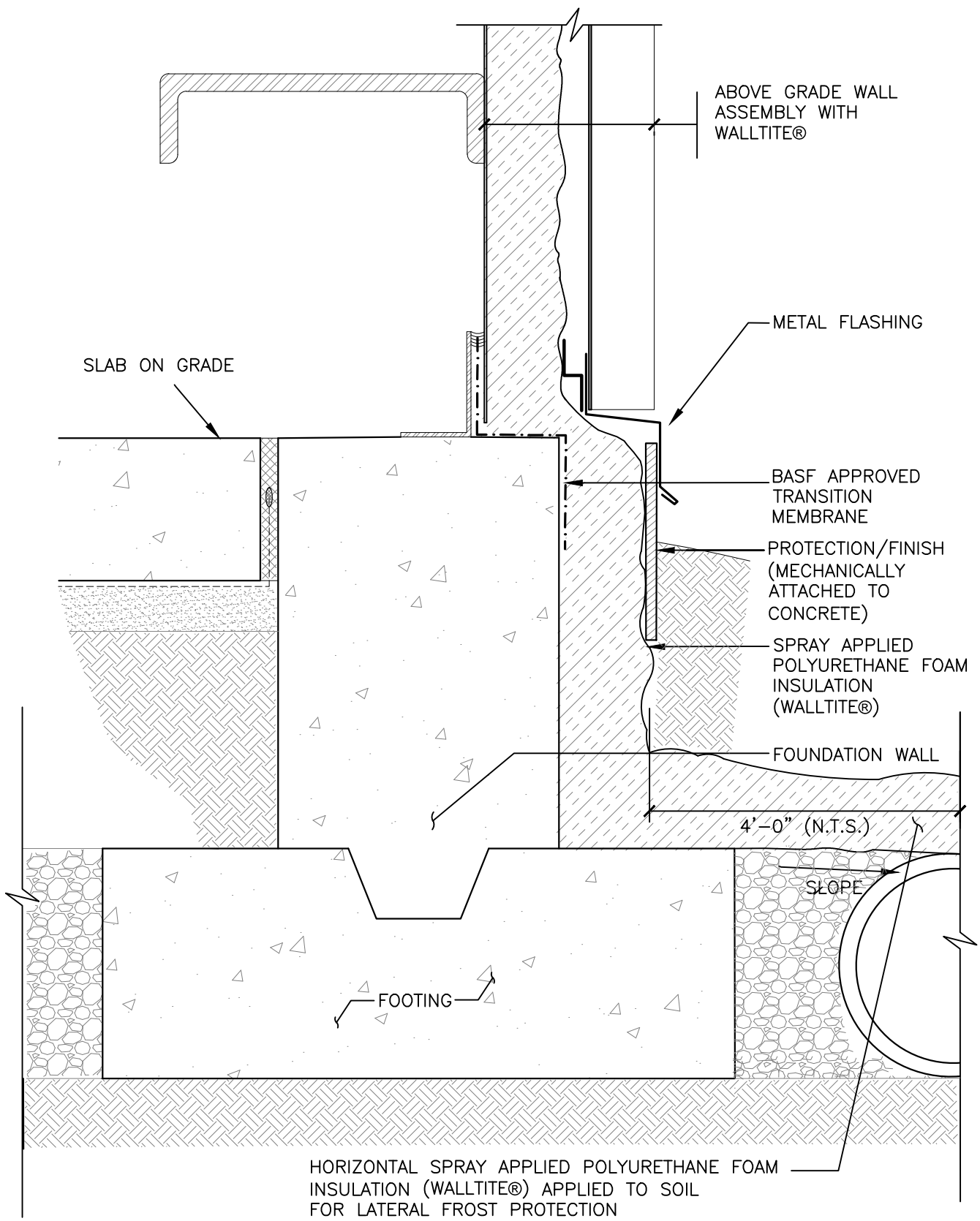


EXTERIOR INSULATED FOUNDATION WALL
AND TOP OF FOOTING



BASF Canada
www.walltite.com
 1-866-474-3538

Drawing No.: A5.104	Scale: 3"=1'-0"	Project No.: 1113608.00	Date: MAY 14	Design: PR	Drawn: LA	Reviewed: PR
------------------------	--------------------	----------------------------	-----------------	---------------	--------------	-----------------

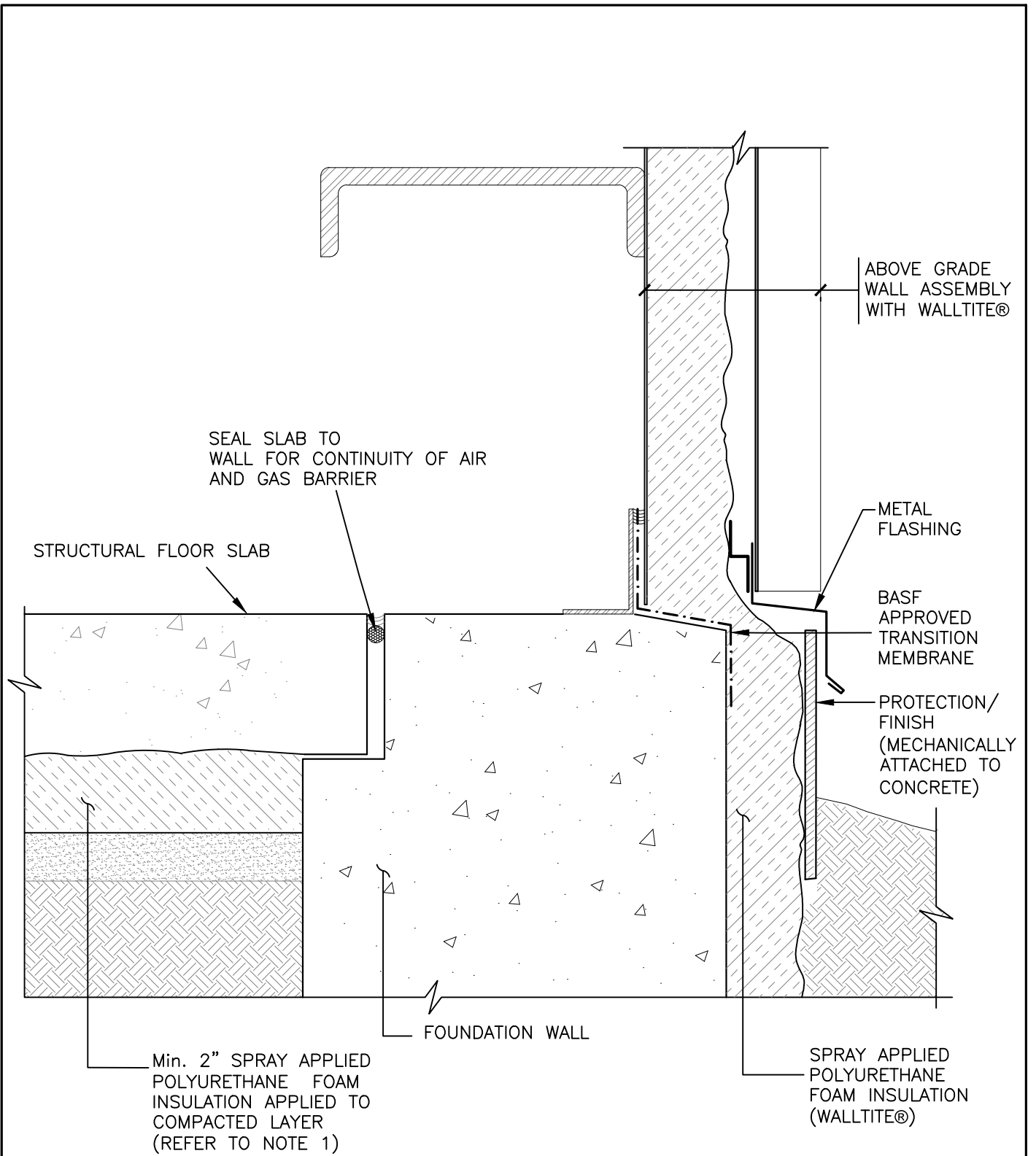


**EXTERIOR INSULATED SHALLOW
FOUNDATION WALL AND EXTENSION**



BASF Canada
www.walltite.com
 1-866-474-3538

Drawing No.: A5.105	Scale: 3"=1'-0"	Project No.: 1113608.00	Date: MAY 14	Design: PR	Drawn: LA	Reviewed: PR
------------------------	--------------------	----------------------------	-----------------	---------------	--------------	-----------------



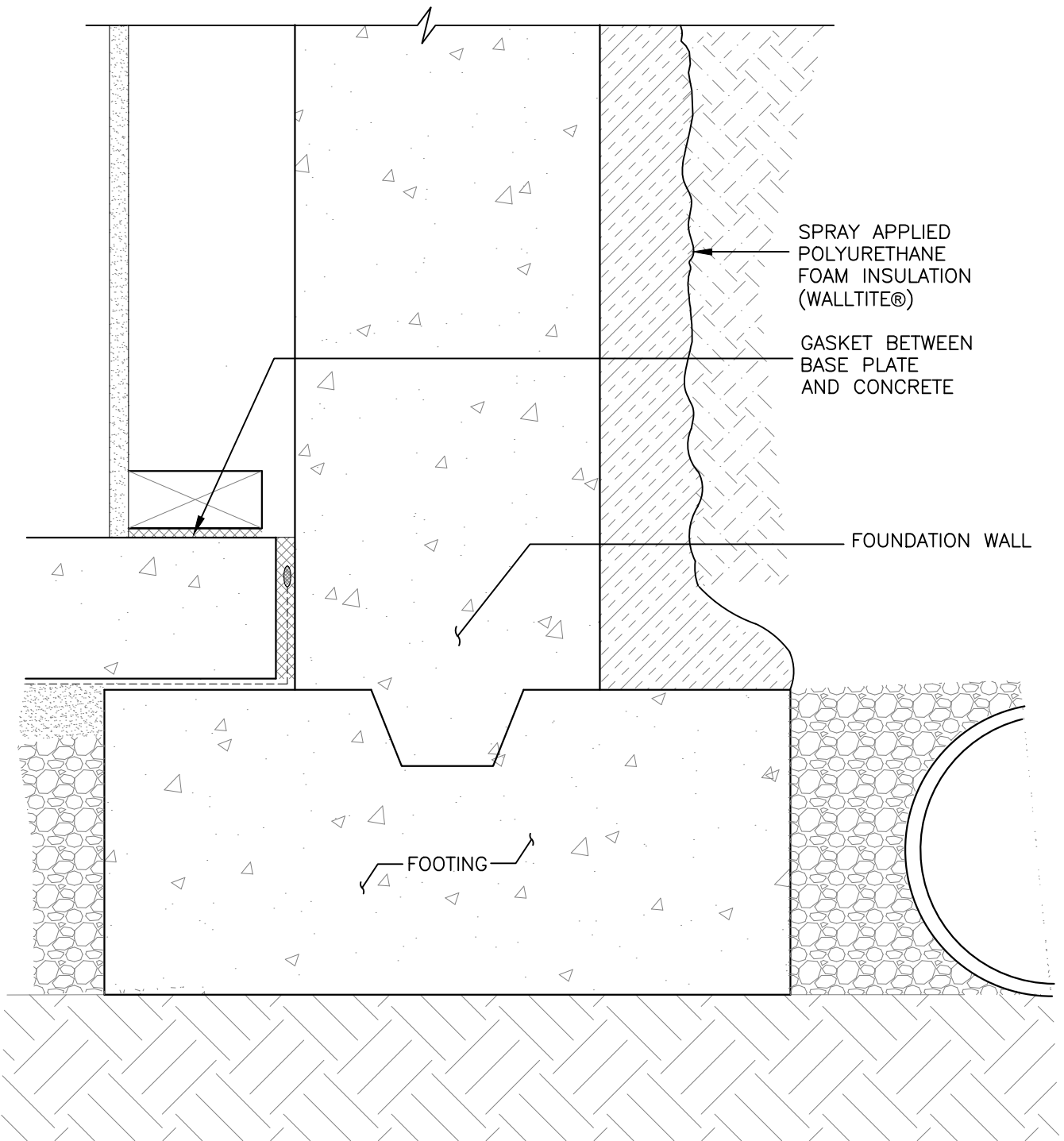
NOTE 1: THE APPLICATION OF SPRAY APPLIED POLYURETHANE FOAM INSULATION TO THE UNDERSIDE OF FLOOR SLABS SHOULD NOT BE USED IN A STRUCTURAL CAPACITY WITHOUT THE REVIEW AND ANALYSIS OF A DESIGN PROFESSIONAL

INSULATED STRUCTURAL FLOOR SLAB



BASF Canada
www.walltite.com
 1-866-474-3538

Drawing No.: A5.106	Scale: 3"=1'-0"	Project No.: 1113608.00	Date: MAY 14	Design: PR	Drawn: LA	Reviewed: PR
------------------------	--------------------	----------------------------	-----------------	---------------	--------------	-----------------



EXTERIOR INSULATED FOUNDATION WALL
- BASEMENT



BASF Canada
www.walltite.com
 1-866-474-3538

Drawing No.: A5.107	Scale: 3"=1'-0"	Project No.: 1113608.00	Date: MAY 14	Design: PR	Drawn: LA	Reviewed: PR
------------------------	--------------------	----------------------------	-----------------	---------------	--------------	-----------------

SPRAY APPLIED
POLYURETHANE
FOAM INSULATION
(WALLTITE®)

FOUNDATION WALL

PROVIDE SPRAY APPLIED
POLYURETHANE FOAM
INSULATION (WALLTITE®)
BETWEEN SLAB AND
FOUNDATION AS
REQUIRED BY AUTHORITY
HAVING JURISDICTION

GASKET BETWEEN BASE
PLATE AND CONCRETE

Min. 2" SPRAY APPLIED
POLYURETHANE FOAM
INSULATION (WALLTITE®)
APPLIED TO COMPACTED
LAYER (REFER TO NOTE 1)

FOOTING

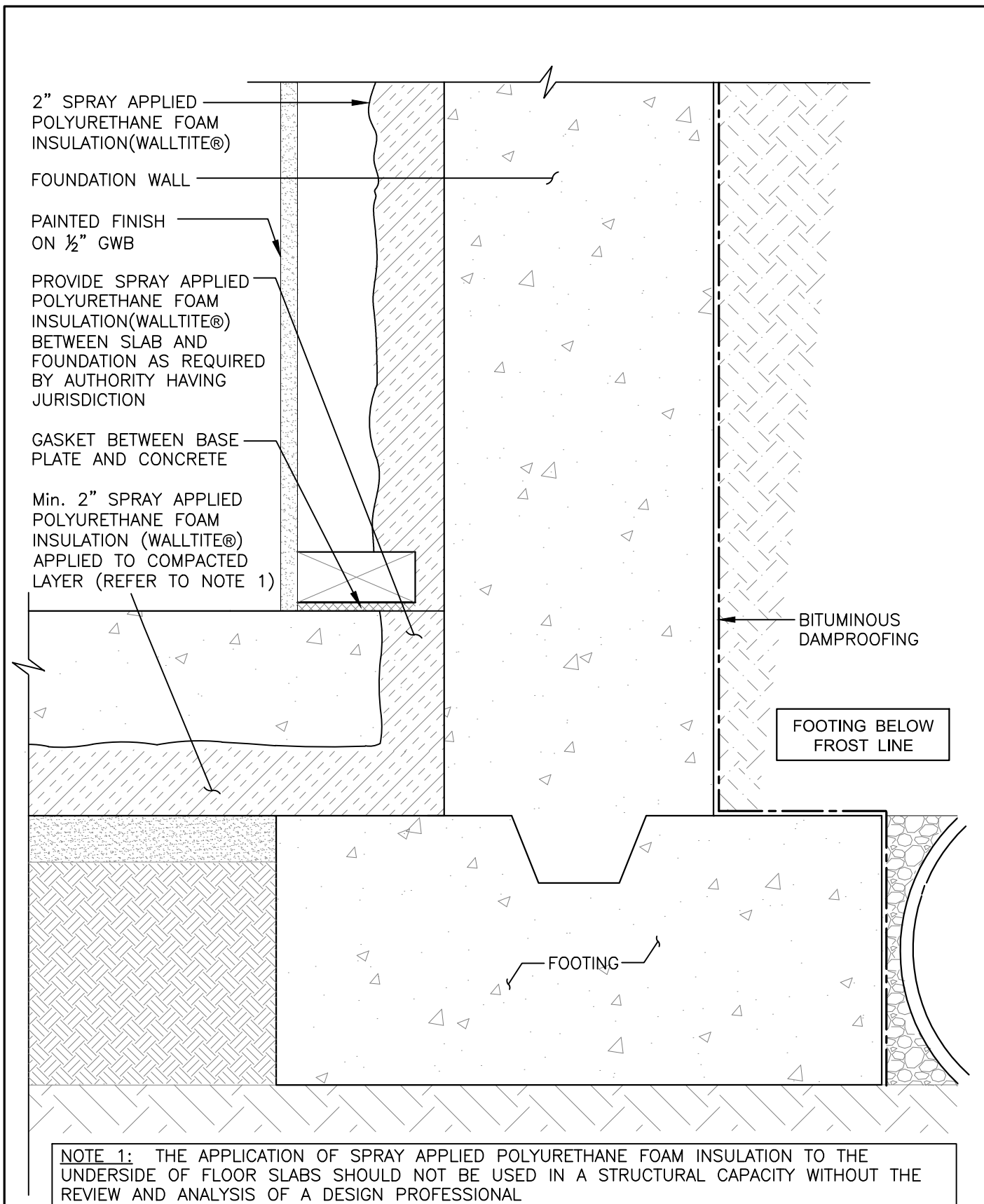
NOTE 1: THE APPLICATION OF SPRAY APPLIED POLYURETHANE FOAM INSULATION TO THE UNDERSIDE OF FLOOR SLABS SHOULD NOT BE USED IN A STRUCTURAL CAPACITY WITHOUT THE REVIEW AND ANALYSIS OF A DESIGN PROFESSIONAL

**INSULATED FLOOR SLAB
- BASEMENT**



BASF Canada
www.walltite.com
1-866-474-3538

Drawing No.: A5.108	Scale: 3"=1'-0"	Project No.: 1113608.00	Date: MAY 14	Design: PR	Drawn: LA	Reviewed: PR
------------------------	--------------------	----------------------------	-----------------	---------------	--------------	-----------------



FOUNDATION WALL AT FOOTING



BASF Canada
www.walltite.com
 1-866-474-3538

Drawing No.: A5.109	Scale: 3"=1'-0"	Project No.: 1113608.00	Date: MAY 14	Design: PR	Drawn: LA	Reviewed: PR
---------------------	-----------------	-------------------------	--------------	------------	-----------	--------------